

Phospho-RELA (Ser468) Antibody



PACO24353

Product Information

Size:

100ul

Reactivity:

Human, Mouse, Rat

Source:

Rabbit

Isotype:

IgG

Applications:

ELISA, WB, IF

Recommended dilutions:

ELISA:1:2000-1:10000, WB:1:500-1:1000,
IF:1:100-1:200

Protein Background:**Gene ID:**

RELA

Uniprot

Q04206

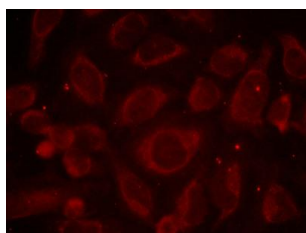
Synonyms:

p65, NFKB3,

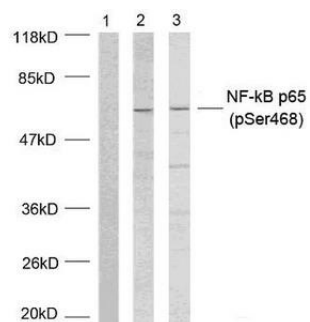
Immunogen:**Storage:**

Purified Rabbit polyclonal in PBS(pH 7.4) containing with 0.02% sodium azide and 50% glycerol.

Product Images



Immunofluorescence staining of methanol-fixed HeLa cells using NF-kappa B p65 (phospho-Ser468) antibody.



Western blot analysis of extracts using NF-kappa B p65 (phospho-Ser468) antibody.