

Phospho-Bad (Ser155) Antibody



PACO24359

Product Information

Size:

100ul

Reactivity:

Human, Mouse, Rat

Source:

Rabbit

Isotype:

IgG

Applications:

ELISA, WB, IHC

Recommended dilutions:

ELISA:1:2000-1:10000, WB:1:500-1:1000,
IHC:1:50-1:100

Protein Background:**Gene ID:**

Bad

Uniprot

Q61337

Synonyms:

Bbc2; AI325008

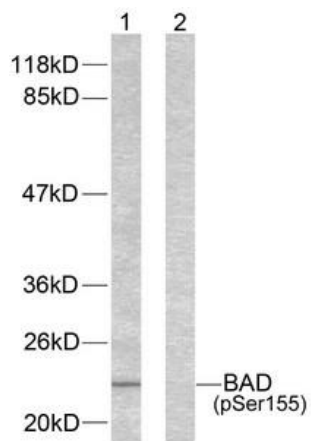
Immunogen:

Peptide sequence around phosphorylation site of serine 155(R-M-S(p)-D-E) derived from Human BAD.

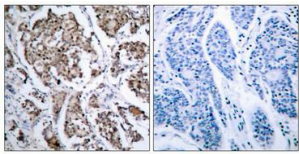
Storage:

Supplied at 1.0mg/mL in phosphate buffered saline (without Mg²⁺ and Ca²⁺), pH 7.4, 150mM NaCl, 0.02% sodium azide and 50% glycerol.

Product Images



Western blot analysis of extracts from 293 cells using BAD (phospho-Ser155) antibody.



Immunohistochemical analysis of paraffin-embedded human breast carcinoma tissue using BAD (phospho-Ser155) antibody.