

Phospho-CEBPA (Ser21) Antibody



PACO24366

Product Information

Size:

100ul

Reactivity:

Human, Mouse, Rat

Source:

Rabbit

Isotype:

IgG

Applications:

ELISA, WB, IHC

Recommended dilutions:

ELISA:1:2000-1:10000, WB:1:500-1:1000,
IHC:1:50-1:100

Protein Background:**Gene ID:**

CEBPA

Uniprot

P49715

Synonyms:

CAP4; ICE8; MACH; MCH5; Mch-5

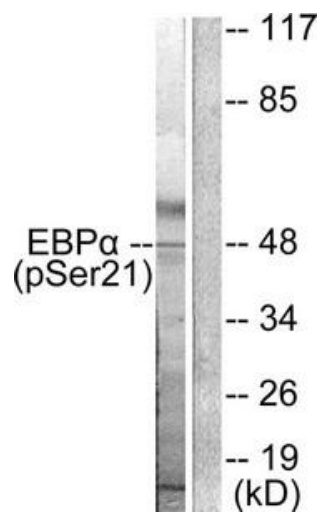
Immunogen:

Peptide sequence around phosphorylation site of Serine 21 (L-Q-S(p)-P-P) derived from Human C/EBP- α ;

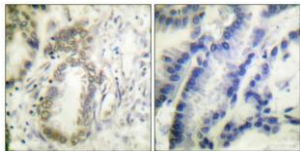
Storage:

Rabbit IgG in phosphate buffered saline (without Mg²⁺ and Ca²⁺), pH 7.4, 150mM NaCl, 0.02% sodium azide and 50% glycerol.

Product Images



Western blot analysis of extracts from HepG2 cells treated with EGF using C/EBP-alpha (phospho-Ser21) Antibody. The lane on the right is treated with the antigen-specific peptide.



Immunohistochemical analysis of paraffin-embedded human colon carcinoma tissue using C/EBP- alpha (phospho-Ser21) antibody (left) or the same antibody preincubated with blocking peptide (right).