

# Phospho-ITGB1 (Thr789) Antibody



PACO24371

---

## Product Information

**Size:**

100ul

**Reactivity:**

Human, Mouse, Rat

**Source:**

Rabbit

**Isotype:**

IgG

**Applications:**

ELISA, WB, IHC

**Recommended dilutions:**

ELISA:1:2000-1:10000, WB:1:500-1:1000,  
IHC:1:50-1:100

**Protein Background:****Gene ID:**

ITGB1

**Uniprot**

P05556

**Synonyms:**

CD29; FNRB; ITB1;

**Immunogen:**

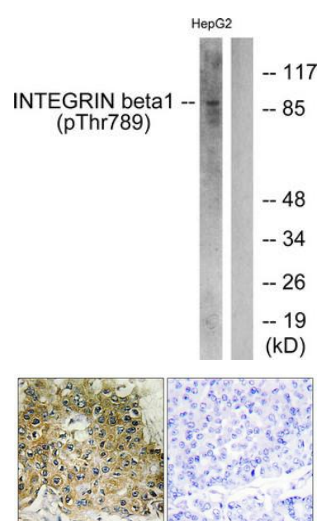
Peptide sequence around phosphorylation site of threonine 789(V-E-T(p)-V-V) derived from Human Integrin  $\beta$ 1.

**Storage:**

Rabbit IgG in phosphate buffered saline (without Mg<sup>2+</sup> and Ca<sup>2+</sup>), pH 7.4, 150mM NaCl, 0.02% sodium azide and 50% glycerol.

## Product Images

---



Western blot analysis of extracts from HepG2 cells treated with Ca<sup>2+</sup> using Integrin beta 1 (Phospho-Thr789) Antibody. The lane on the right is treated with the antigen-specific peptide.

Immunohistochemical analysis of paraffin-embedded human breast carcinoma tissue using Integrin beta 1 (Phospho-Thr789) antibody (left) or the same antibody preincubated with blocking peptide (right).