

Phospho-CHEK1 (Ser296) Antibody



PACO24375

Product Information

Size:

100ul

Reactivity:

Human

Source:

Rabbit

Isotype:

IgG

Applications:

ELISA, WB, IHC

Recommended dilutions:

ELISA:1:2000-1:10000, WB:1:500-1:1000,
IHC:1:50-1:100

Protein Background:**Gene ID:**

CHEK1

Uniprot

O14757

Synonyms:

CHEK1; Chk1; kinase Chk1; EC 2.7.11.1;

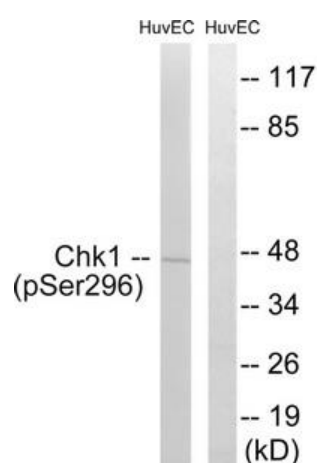
Immunogen:

Peptide sequence around phosphorylation site of Serine 296(I-F-S(p)-N-L) derived from Human Chk1.

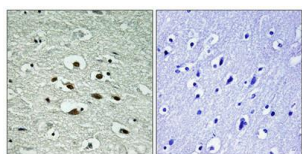
Storage:

Rabbit IgG in phosphate buffered saline (without Mg²⁺ and Ca²⁺), pH 7.4, 150mM NaCl, 0.02% sodium azide and 50% glycerol.

Product Images



Western blot analysis of extracts from HUVEC cells treated with UV using Chk1 (Phospho-Ser296) Antibody. The lane on the right is treated with the antigen-specific peptide.



Immunohistochemical analysis of paraffin-embedded human brain tissue using Chk1 (Phospho-Ser296) antibody (left) or the same antibody preincubated with blocking peptide (right).