

**Phospho-EPHA2/EPHA3/EPHA4 (Tyr588/596)
Antibody
PACO24381**



Product Information

Size:

100ul

Protein Background:

Reactivity:

Human, Mouse

Gene ID:

EPHA2/EPHA3/EPHA4

Source:

Rabbit

Uniprot

P29317/P29320/P54764

Isotype:

IgG

Synonyms:

ECK; MPK-5; SEK2; kinase EphA2;

Applications:

ELISA, WB, IF

Immunogen:

Peptide sequence around phosphorylation site of tyrosine 588/596 (K-T-Y(p)-V-R)/(R-T-Y(p)-V-D) derived from Human EPHA2/3/4.

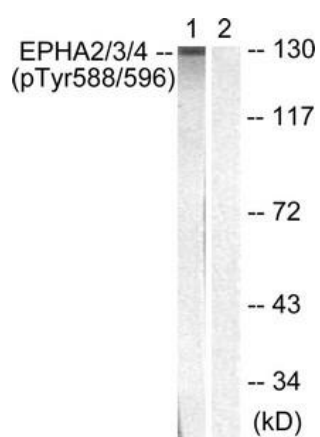
Recommended dilutions:

ELISA:1:2000-1:10000, WB:1:500-1:1000,
IF:1:100-1:200

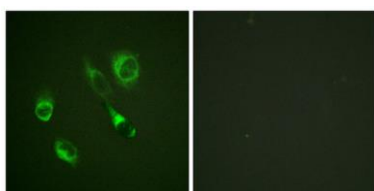
Storage:

Rabbit IgG in phosphate buffered saline (without Mg²⁺ and Ca²⁺), pH 7.4, 150mM NaCl, 0.02% sodium azide and 50% glycerol.

Product Images



Western blot analysis of extracts from HepG2 cells using EPHA2/3/4 (Phospho-Tyr588/596) Antibody. The lane on the right is treated with the antigen-specific peptide.



Immunofluorescence staining of methanol-fixed HeLa cells using EPHA2/3/4 (Phospho-Tyr588/596) Antibody.