

Phospho-SNAI1 (Ser246) Antibody



PACO24385

Product Information

Size:

100ul

Reactivity:

Human, Mouse

Source:

Rabbit

Isotype:

IgG

Applications:

ELISA, WB, IF

Recommended dilutions:

ELISA:1:2000-1:10000, WB:1:500-1:1000,
IF:1:100-1:200

Protein Background:**Gene ID:**

SNAI1

Uniprot

O95863

Synonyms:

SNAH; SNAI; Sna; Snail;

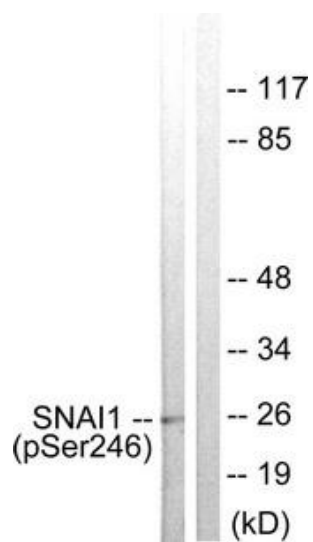
Immunogen:

Peptide sequence around phosphorylation site of Serine 246(T-F-S(p)-R-M) derived from Human SNAI1.

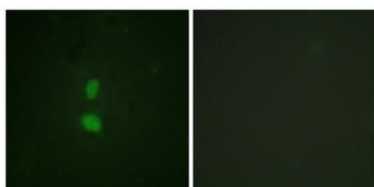
Storage:

Rabbit IgG in phosphate buffered saline (without Mg²⁺ and Ca²⁺), pH 7.4, 150mM NaCl, 0.02% sodium azide and 50% glycerol.

Product Images



Western blot analysis of extracts from HT29 cells using SNAI1 (Phospho-Ser246) Antibody. The lane on the right is treated with the antigen-specific peptide.



Immunofluorescence staining of methanol-fixed HuvEc cells using SNAI1 (Phospho-Ser246) Antibody.