

Phospho-CSNK1A1/CSNK1A1L (Tyr294) Antibody



PACO24388

Product Information

Size:

100ul

Reactivity:

Human, Mouse, Rat

Source:

Rabbit

Isotype:

IgG

Applications:

ELISA, WB, IHC

Recommended dilutions:

ELISA:1:2000-1:10000, WB:1:500-1:1000,
IHC:1:50-1:100

Protein Background:**Gene ID:**

CSNK1A1/CSNK1A1L

Uniprot

P48729/Q8N752

Synonyms:

KC1A; CKI-alpha; CSNK1A1; alpha isoform; Casein kinase I

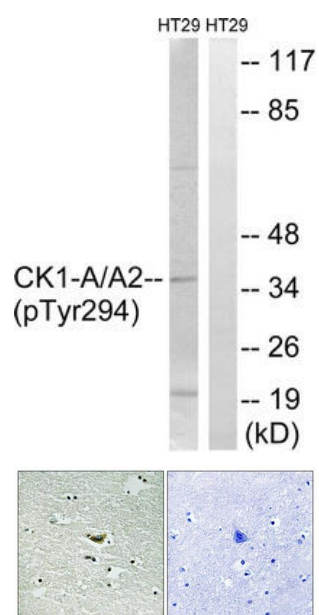
Immunogen:

Peptide sequence around phosphorylation site of tyrosine 294 (Y-D-Y(p)-T-F) derived from Human CK-1 α .

Storage:

Rabbit IgG in phosphate buffered saline (without Mg²⁺ and Ca²⁺), pH 7.4, 150mM NaCl, 0.02% sodium azide and 50% glycerol.

Product Images



Western blot analysis of extracts from HT-29 cells treated with heat shock using CK-1alpha (Phospho-Tyr294) Antibody. The lane on the right is treated with the antigen-specific peptide.

Immunohistochemical analysis of paraffin-embedded human brain tissue using CK-1 alpha (Phospho-Tyr294) antibody (left) or the same antibody preincubated with blocking peptide (right).