

Phospho-MERTK/TYRO3 (Tyr749/681) Antibody



PACO24391

Product Information

Size:

100ul

Reactivity:

Human, Mouse, Rat

Source:

Rabbit

Isotype:

IgG

Applications:

ELISA, WB, IHC

Recommended dilutions:

ELISA:1:2000-1:10000, WB:1:500-1:1000,
IHC:1:50-1:100

Protein Background:**Gene ID:**

MERTK/TYRO3

Uniprot

Q12866/Q06418

Synonyms:

C-mer, MERK; MERTK;

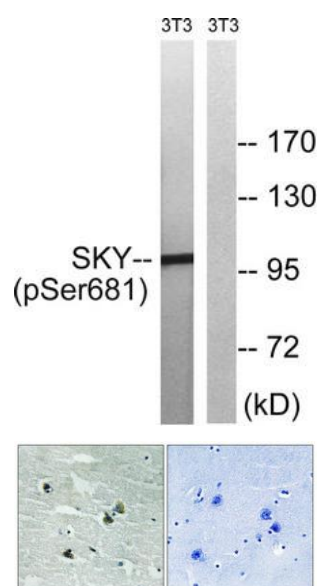
Immunogen:

Peptide sequence around phosphorylation site of tyrosine 749/681(K-I-Y(p)-S-G) derived from Human MER/SKY.

Storage:

Rabbit IgG in phosphate buffered saline (without Mg²⁺ and Ca²⁺), pH 7.4, 150mM NaCl, 0.02% sodium azide and 50% glycerol.

Product Images



Western blot analysis of extracts from 3T3 cells treated with EGF using MER/SKY (Phospho-Tyr749/681) Antibody. The lane on the right is treated with the antigen-specific peptide.

Immunohistochemical analysis of paraffin-embedded human brain tissue using MER/SKY (Phospho-Tyr749/681) antibody (left) or the same antibody preincubated with blocking peptide (right).