

Phospho-MAPKAPK2 (Ser272) Antibody



PACO24408

Product Information

Size:

100ul

Reactivity:

Human, Mouse, Rat

Source:

Rabbit

Isotype:

IgG

Applications:

ELISA, WB, IHC

Recommended dilutions:

ELISA:1:2000-1:10000, WB:1:500-1:1000,
IHC:1:50-1:100

Protein Background:**Gene ID:**

MAPKAPK2

Uniprot

P49137

Synonyms:

MAPK2; MAPKAPK2; RPS6KC1;

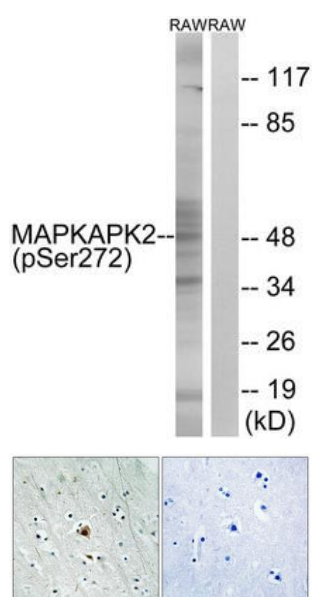
Immunogen:

Peptide sequence around phosphorylation site of Serine 272(A-I-S(p)-P-G) derived from Human MAPKAPK2.

Storage:

Rabbit IgG in phosphate buffered saline (without Mg²⁺ and Ca²⁺), pH 7.4, 150mM NaCl, 0.02% sodium azide and 50% glycerol.

Product Images



Western blot analysis of extracts from RAW264.7 cells treated with UV using MAPKAPK2 (Phospho-Ser272) Antibody. The lane on the right is treated with the antigen-specific peptide.

Immunohistochemical analysis of paraffin-embedded human brain tissue using MAPKAPK2 (Phospho-Ser272) antibody (left) or the same antibody preincubated with blocking peptide (right).