

Phospho-TOP2A (Ser1106) Antibody



PACO24417

Product Information

Size:

100ul

Reactivity:

Human, Mouse

Source:

Rabbit

Isotype:

IgG

Applications:

ELISA, WB, IHC

Recommended dilutions:

ELISA:1:2000-1:10000, WB:1:500-1:3000,
IHC:1:50-1:100

Protein Background:

Control of topological states of DNA by transient breakage and subsequent rejoining of DNA strands. Topoisomerase II makes double-strand breaks. Essential during mitosis and meiosis for proper segregation of daughter chromosomes.

Gene ID:

TOP2A

Uniprot

P11388

Synonyms:

alpha isozyme; DNA topoisomerase II; DNA topoisomerase II-alpha; EC 5.99.1.3; P11388-1; TOP-2; TOP2; TOP2A; TP2A

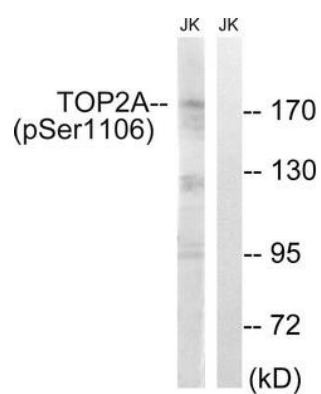
Immunogen:

Peptide sequence around phosphorylation site of serine 1106 (E-E-S(p)-D-N) derived from Human TOP2A.

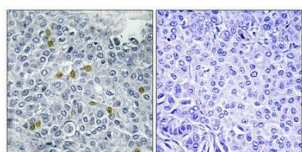
Storage:

Rabbit IgG in phosphate buffered saline (without Mg²⁺ and Ca²⁺), pH 7.4, 150mM NaCl, 0.02% sodium azide and 50% glycerol.

Product Images



Western blot analysis of extracts from Jurkat cells, treated with paclitaxel (1uM, 24hours), using TOP2A (Phospho-Ser1106) antibody. The lane on the right is treated with the synthesized peptide.



Immunohistochemistry analysis of paraffin-embedded human breast carcinoma tissue using TOP2A (Phospho-Ser1106) antibody. The picture on the right is treated with the synthesized peptide.