

# Phospho-RIPK2 (Ser176) Antibody



PACO24421

---

## Product Information

**Size:**

100ul

**Reactivity:**

Human, Mouse

**Source:**

Rabbit

**Isotype:**

IgG

**Applications:**

ELISA, WB, IHC

**Recommended dilutions:**

ELISA:1:2000-1:10000, WB:1:500-1:3000,  
IHC:1:50-1:100

**Protein Background:****Gene ID:**

RIPK2

**Uniprot**

O43353

**Synonyms:**

CARD-containing IL-1 beta ICE-kinase; CARD-containing interleukin-1 beta converting enzyme associated kinase; CARDIAK; EC 2.7.11.1; kinase RIPK2; Receptor-interacting protein 2; Receptor-interacting serine/threonine protein kinase 2; RICK; RIP-2; RIP-like

**Immunogen:**

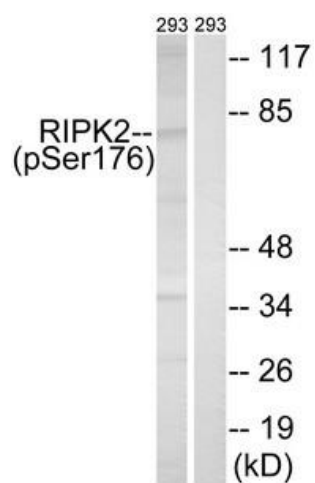
Peptide sequence around phosphorylation site of serine 176 (S-L-S(p)-Q-S) derived from Human RIPK2.

**Storage:**

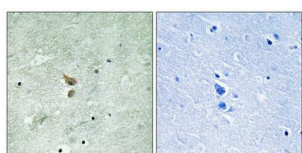
Rabbit IgG in phosphate buffered saline (without Mg<sup>2+</sup> and Ca<sup>2+</sup>), pH 7.4, 150mM NaCl, 0.02% sodium azide and 50% glycerol.

## Product Images

---



Western blot analysis of extracts from 293 cells, treated with UV (15mins), using RIPK2 (Phospho-Ser176) antibody. The lane on the right is treated with the synthesized peptide.



Immunohistochemistry analysis of paraffin-embedded human brain tissue using RIPK2 (Phospho-Ser176) antibody. The picture on the right is treated with the synthesized peptide.