

Phospho-TP53BP1 (Ser25) Antibody



PACO24423

Product Information

Size:

100ul

Reactivity:

Human, Mouse, Rat

Source:

Rabbit

Isotype:

IgG

Applications:

ELISA, IHC, IF

Recommended dilutions:

ELISA:1:2000-1:10000, IHC:1:50-1:100,
IF:1:100-1:500

Protein Background:

Plays a key role in the response to DNA damage. May have a role in checkpoint signaling during mitosis. Enhances TP53-mediated transcriptional activation.

Gene ID:

TP53BP1

Uniprot

Q12888

Synonyms:

P531; TP53B; TP53BP1; TRP53BP1; Tumor suppressor p53-binding protein 1; p53-binding protein 1

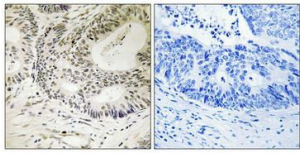
Immunogen:

Peptide sequence around phosphorylation site of serine 25 (E-D-S(p)-Q-P) derived from Human 53BP1.

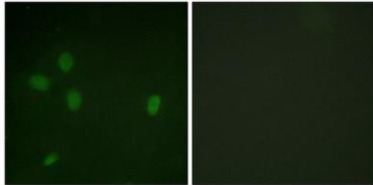
Storage:

Rabbit IgG in phosphate buffered saline (without Mg²⁺ and Ca²⁺), pH 7.4, 150mM NaCl, 0.02% sodium azide and 50% glycerol.

Product Images



Immunohistochemistry analysis of paraffin-embedded human colon carcinoma tissue using 53BP1 (Phospho-Ser25) antibody. The picture on the right is treated with the synthesized peptide.



Immunofluorescence analysis of NIH/3T3 cells, using 53BP1 (Phospho-Ser25) antibody. The picture on the right is treated with the synthesized peptide.