

Phospho-FANCG (Ser383) Antibody



PACO24428

Product Information

Size:

100ul

Reactivity:

Human

Source:

Rabbit

Isotype:

IgG

Applications:

ELISA, WB

Recommended dilutions:

ELISA:1:2000-1:10000, WB:1:500-1:3000

Protein Background:**Gene ID:**

FANCG

Uniprot

O15287

Synonyms:

Fanconi anemia group G protein; Protein FACG; DNA repair protein XRCC9

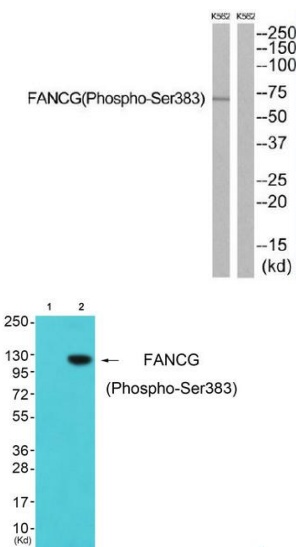
Immunogen:

Peptide sequence around phosphorylation site of serine 383 (R-F-S(p)-P-P) derived from Human FANCG.

Storage:

Rabbit IgG in phosphate buffered saline (without Mg²⁺ and Ca²⁺), pH 7.4, 150mM NaCl, 0.02% sodium azide and 50% glycerol.

Product Images



Western blot analysis of extracts from K562 cells, using FANCG (Phospho-Ser383) antibody. The lane on the right is treated with the synthesized peptide.

Western blot analysis of extracts from cos-7 cells (Lane 2), using FANCG (Phospho-Ser383) Antibody. The lane on the left is treated with synthesized peptide.