

Phospho-MDM4 (Ser367) Antibody



PACO24429

Product Information

Size:

100ul

Reactivity:

Human, Mouse, Rat

Source:

Rabbit

Isotype:

IgG

Applications:

ELISA, WB, IHC

Recommended dilutions:

ELISA:1:2000-1:10000, WB:1:500-1:3000,
IHC:1:50-1:100

Protein Background:

Inhibits p53/TP53- and TP73/p73-mediated cell cycle arrest and apoptosis by binding its transcriptional activation domain. Inhibits degradation of MDM2. Can reverse MDM2-targeted degradation of TP53 while maintaining suppression of TP53 transactivation and apoptotic functions.

Gene ID:

MDM4

Uniprot

O15151

Synonyms:

double minute 4 protein; Mdm2-like p53-binding protein; MDMX; p53-binding protein Mdm4

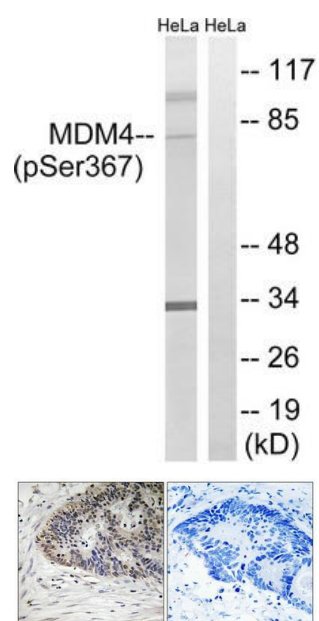
Immunogen:

Peptide sequence around phosphorylation site of serine 367 (T-I-S(p)-A-P) derived from Human MDM4.

Storage:

Rabbit IgG in phosphate buffered saline (without Mg²⁺ and Ca²⁺), pH 7.4, 150mM NaCl, 0.02% sodium azide and 50% glycerol.

Product Images



Western blot analysis of extracts from HeLa cells, treated with calyculinA (50ng/ml, 30mins), using MDM4 (Phospho-Ser367) antibody. The lane on the right is treated with the synthesized peptide.

Immunohistochemistry analysis of paraffin-embedded human colon carcinoma tissue using MDM4 (Phospho-Ser367) antibody. The picture on the right is treated with the synthesized peptide.