

Phospho-RPS6KA4 (Thr568) Antibody



PACO24430

Product Information

Size:

100ul

Reactivity:

Human, Mouse

Source:

Rabbit

Isotype:

IgG

Applications:

ELISA, WB, IHC

Recommended dilutions:

ELISA:1:2000-1:10000, WB:1:500-1:3000,
IHC:1:50-1:100

Protein Background:**Gene ID:**

RPS6KA4

Uniprot

O75676

Synonyms:

EC 2.7.11.1; kinase MSK2; KS6A4; Ribosomal protein kinase B; RPS6KA4; RSK-B; Similar to ribosomal protein S6 kinase; 90kD; polypeptide 4

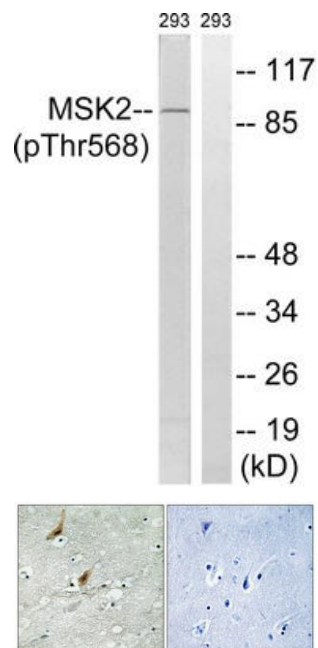
Immunogen:

Peptide sequence around phosphorylation site of threonine 568 (M-Q-T(p)-P-C) derived from Human MSK2.

Storage:

Rabbit IgG in phosphate buffered saline (without Mg²⁺ and Ca²⁺), pH 7.4, 150mM NaCl, 0.02% sodium azide and 50% glycerol.

Product Images



Western blot analysis of extracts from 293 cells, treated with H₂O₂ (100uM, 15mins), using MSK2 (Phospho-Thr568) antibody. The lane on the right is treated with the synthesized peptide.

Immunohistochemistry analysis of paraffin-embedded human brain tissue using MSK2 (Phospho-Thr568) antibody. The picture on the right is treated with the synthesized peptide.