

Phospho-PDPK1 (Ser241) Antibody



PACO24440

Product Information

Size:

100ul

Reactivity:

Human, Mouse, Rat

Source:

Rabbit

Isotype:

IgG

Applications:

ELISA, WB, IHC, IF

Recommended dilutions:

ELISA:1:2000-1:10000, WB:1:500-1:1000,
IHC:1:50-1:100, IF:1:100-1:200

Protein Background:

Phosphorylates and activates not only PKB/AKT, but also PKA, PKC-zeta, RPS6KA1 and RPS6KB1. May play a general role in signaling processes and in development.

Gene ID:

PDPK1

Uniprot

O15530

Synonyms:

PDPK1; Pkb kinase; Protein kinase B kinase; hPDK1; kinase PDK1

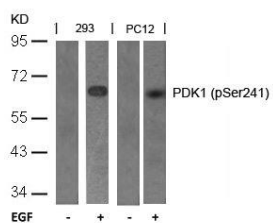
Immunogen:

Peptide sequence around phosphorylation site of serine 241 (A-N-S(p)-F-V) derived from Human PDK1.

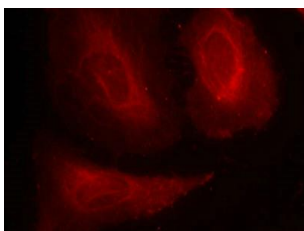
Storage:

Supplied at 1.0mg/mL in phosphate buffered saline (without Mg²⁺ and Ca²⁺), pH 7.4, 150mM NaCl, 0.02% sodium azide and 50% glycerol.

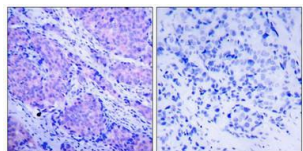
Product Images



Western blot analysis of extracts from 293 and PC12 cells untreated or treated with EGF using PDK1(Phospho-Ser241) Antibody.



Immunofluorescence staining of methanol-fixed HeLa cells using PDK1(Phospho-Ser241) Antibody.



Immunohistochemical analysis of paraffin-embedded human breast carcinoma tissue using PDK1(Phospho-Ser241) Antibody(left) or the same antibody preincubated with blocking peptide(right).