

# Phospho-JUN (Thr239) Antibody



PACO24443

---

## Product Information

**Size:**

100ul

**Reactivity:**

Human, Mouse, Rat

**Source:**

Rabbit

**Isotype:**

IgG

**Applications:**

ELISA, WB, IHC, IF

**Recommended dilutions:**

ELISA:1:2000-1:10000, WB:1:500-1:1000,  
IHC:1:50-1:100, IF:1:100-1:200

**Protein Background:**

Transcription factor that recognizes and binds to the enhancer heptamer motif 5'-TGA[CG]TCA-3'.

**Gene ID:**

JUN

**Uniprot**

P05412

**Synonyms:**

AH119; AP1; Jun A; c-Jun; p39

**Immunogen:**

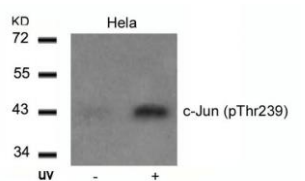
Peptide sequence around phosphorylation site of threonine 239 (G-E-T(p)-P-P) derived from Human c-Jun.

**Storage:**

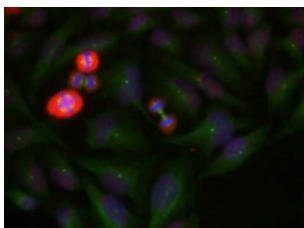
Supplied at 1.0mg/mL in phosphate buffered saline (without Mg<sup>2+</sup> and Ca<sup>2+</sup>), pH 7.4, 150mM NaCl, 0.02% sodium azide and 50% glycerol.

## Product Images

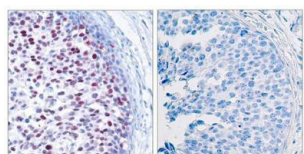
---



Western blot analysis of extracts from HeLa cells untreated or treated with UV using c-Jun(Phospho-Thr239) Antibody.



Immunofluorescence staining of methanol-fixed HeLa cells using c-Jun(Phospho-Thr239) Antibody.



Immunohistochemical analysis of paraffin-embedded human breast carcinoma tissue using c-Jun(Phospho-Thr239) Antibody(left) or the same antibody preincubated with blocking peptide(right).