

Phospho-ESR1 (Ser167) Antibody



PACO24449

Product Information

Size:

100ul

Reactivity:

Human, Mouse

Source:

Rabbit

Isotype:

IgG

Applications:

ELISA, WB, IHC, IF

Recommended dilutions:

ELISA:1:2000-1:10000, WB:1:500-1:1000,
IHC:1:50-1:100, IF:1:100-1:200

Protein Background:

Nuclear hormone receptor. The steroid hormones and their receptors are involved in the regulation of eukaryotic gene expression and affect cellular proliferation and differentiation in target tissues.

Gene ID:

ESR1

Uniprot

P03372

Synonyms:

ER; ESR; ESR1; ESTR; ESTRA

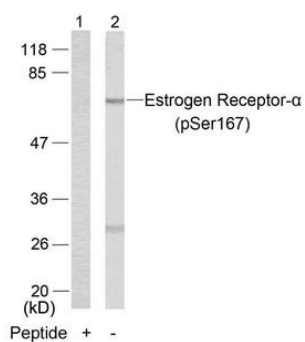
Immunogen:

Peptide sequence around phosphorylation site of serine 167 (L-A-S(p)-T-N) derived from Human Estrogen Receptor- α .

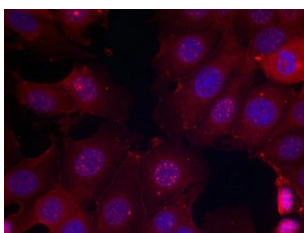
Storage:

Supplied at 1.0mg/mL in phosphate buffered saline (without Mg²⁺ and Ca²⁺), pH 7.4, 150mM NaCl, 0.02% sodium azide and 50% glycerol.

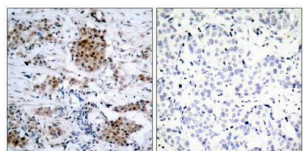
Product Images



Western blot analysis of extracts from MCF7 cells using Estrogen Receptor-α(Phospho-Ser167) Antibody(Lane 2) and the same antibody preincubated with blocking peptide(Lane1).



Immunofluorescence staining of methanol-fixed MCF cells using Estrogen Receptor-α(Phospho-Ser167) Antibody.



Immunohistochemical analysis of paraffin-embedded human breast carcinoma tissue using Estrogen Receptor-α(Phospho-Ser167) Antibody(left) or the same antibody preincubated with blocking peptide(right).