

Phospho-TP53 (Ser315) Antibody



PACO24458

Product Information

Size:

100ul

Reactivity:

Human

Source:

Rabbit

Isotype:

IgG

Applications:

ELISA, WB, IHC, IF

Recommended dilutions:

ELISA:1:2000-1:10000, WB:1:500-1:1000,
IHC:1:50-1:100, IF:1:100-1:200

Protein Background:

Acts as a tumor suppressor in many tumor types; induces growth arrest or apoptosis depending on the physiological circumstances and cell type. Involved in cell cycle regulation as a trans-activator that acts to negatively regulate cell division by controlling a set of genes required for this process. One of the activated genes is an inhibitor of cyclin-dependent kinases. Apoptosis induction seems to be mediated either by stimulation of BAX and FAS antigen expression, or by repression of Bcl-2 expression. Implicated in Notch signaling cross-over.

Gene ID:

TP53

Uniprot

P04637

Synonyms:

Tumor suppressor p53; Phosphoprotein p53; Antigen NY-CO-13; TP53;

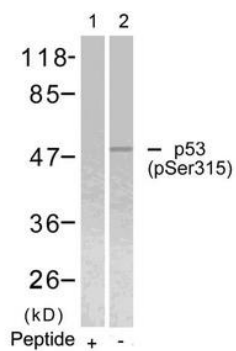
Immunogen:

Peptide sequence around phosphorylation site of serine 315 (S-S-S(p)-P-Q) derived from Human p53.

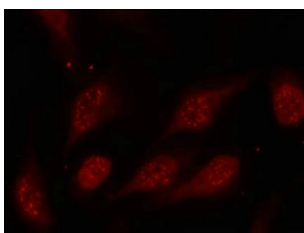
Storage:

Supplied at 1.0mg/mL in phosphate buffered saline (without Mg²⁺ and Ca²⁺), pH 7.4, 150mM NaCl, 0.02% sodium azide and 50% glycerol.

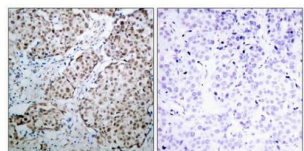
Product Images



Western blot analysis of extracts from HeLa cells using p53(Phospho-Ser315) Antibody(Lane 2) and the same antibody preincubated with blocking peptide(Lane1).



Immunofluorescence staining of methanol-fixed HeLa cells using p53(Phospho-Ser315) Antibody.



Immunohistochemical analysis of paraffin-embedded human breast carcinoma tissue using p53(Phospho-Ser315) Antibody(left) or the same antibody preincubated with blocking peptide(right).