

Phospho-CDC25C (Ser216) Antibody



PACO24461

Product Information

Size:

100ul

Reactivity:

Human

Source:

Rabbit

Isotype:

IgG

Applications:

ELISA, WB, IHC, IF

Recommended dilutions:

ELISA:1:2000-1:10000, WB:1:500-1:1000,
IHC:1:50-1:100, IF:1:100-1:200

Protein Background:

cdc25C is highly conserved during evolution and it plays a key role in the regulation of cell division. The encoded protein is a tyrosine phosphatase and belongs to the Cdc25 phosphatase family. It directs dephosphorylation of cyclin B-bound CDC2 and triggers entry into mitosis. It is also thought to suppress p53-induced growth arrest. Multiple alternatively spliced transcript variants of this gene have been described, however, the full-length nature of many of them is not known.

Gene ID:

CDC25C

Uniprot

P30307

Synonyms:

CDC25M1; MPIP3;

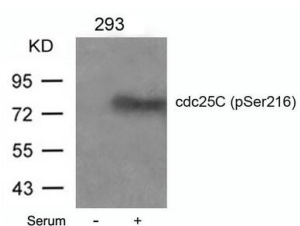
Immunogen:

Peptide sequence around phosphorylation site of serine 216 (S-P-S(p)-M-P) derived from Human cdc25C.

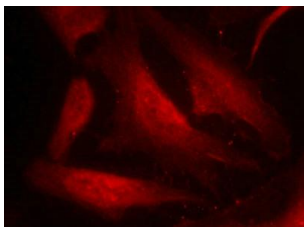
Storage:

Supplied at 1.0mg/mL in phosphate buffered saline (without Mg²⁺ and Ca²⁺), pH 7.4, 150mM NaCl, 0.02% sodium azide and 50% glycerol.

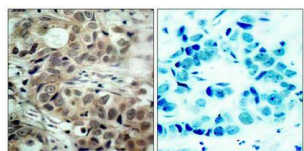
Product Images



Western blot analysis of extracts from 293 cells untreated or treated with serum using cdc25C(Phospho-Ser216) Antibody.



Immunofluorescence staining of methanol-fixed HeLa cells using cdc25C(Phospho-Ser216) Antibody.



Immunohistochemical analysis of paraffin-embedded human breast carcinoma tissue using cdc25C(Phospho-Ser216) Antibody(left) or the same antibody preincubated with blocking peptide(right).