

Phospho-AKT2 (Ser474) Antibody



PACO24462

Product Information

Size:

100ul

Reactivity:

Human, Mouse, Rat

Source:

Rabbit

Isotype:

IgG

Applications:

ELISA, WB, IHC

Recommended dilutions:

ELISA:1:2000-1:10000, WB:1:500-1:1000,
IHC:1:50-1:100

Protein Background:**Gene ID:**

AKT2

Uniprot

P31751

Synonyms:

PKB beta; Protein kinase B; RAC-PK-beta

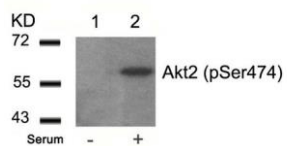
Immunogen:

Peptide sequence around phosphorylation site of serine 474 (Q-F-S(p)-Y-S) derived from Human Akt2.

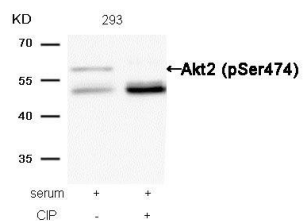
Storage:

Supplied at 1.0mg/mL in phosphate buffered saline (without Mg²⁺ and Ca²⁺), pH 7.4, 150mM NaCl, 0.02% sodium azide and 50% glycerol.

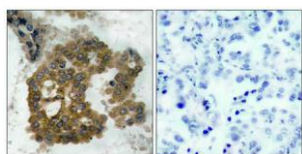
Product Images



Western blot analysis of extracts from 293 cells untreated (lane 1) or treated with serum (lane 2) using Akt2 (Phospho-Ser474) Antibody.



Western blot analysis of extracts from 293 cells, treated with serum or calf intestinal phosphatase (CIP), using Akt2 (Phospho-Ser474) Antibody.



Immunohistochemical analysis of paraffin-embedded human lung carcinoma tissue using Akt2 (Phospho-Ser474) Antibody (left) or the same antibody preincubated with blocking peptide (right).