

Phospho-CHUK (Thr23) Antibody



PACO24465

Product Information

Size:

100ul

Reactivity:

Human, Mouse, Rat

Source:

Rabbit

Isotype:

IgG

Applications:

ELISA, WB, IHC

Recommended dilutions:

ELISA:1:2000-1:10000, WB:1:500-1:1000,
IHC:1:50-1:100

Protein Background:**Gene ID:**

CHUK

Uniprot

O15111

Synonyms:

I kappa-B kinase alpha; I-kappa-B kinase 1; IKK-A; IKK-alpha; IKK1

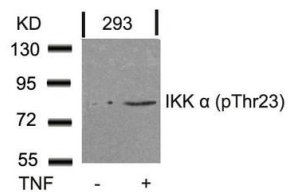
Immunogen:

Peptide sequence around phosphorylation site of threonine 23 (L-G-T(p)-G-G) derived from Human IKK a.

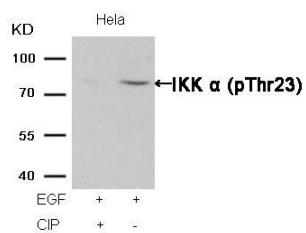
Storage:

Supplied at 1.0mg/mL in phosphate buffered saline (without Mg²⁺ and Ca²⁺), pH 7.4, 150mM NaCl, 0.02% sodium azide and 50% glycerol.

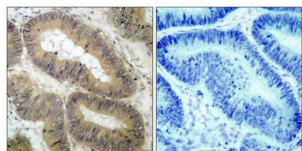
Product Images



Western blot analysis of extracts from 293 cells untreated or treated with TNF using IKK α (Phospho-Thr23) Antibody.



Western blot analysis of extracts from HeLa cells, treated with EGF or calf intestinal phosphatase (CIP), using IKK α (Phospho-Thr23) Antibody.



Immunohistochemical analysis of paraffin-embedded human colon carcinoma tissue using IKK α (Phospho-Thr23) Antibody(left) or the same antibody preincubated with blocking peptide(right).