

Phospho-FOXO4 (Ser197) Antibody



PACO24469

Product Information

Size:

100ul

Reactivity:

Human, Mouse, Rat

Source:

Rabbit

Isotype:

IgG

Applications:

ELISA, WB, IHC, IF

Recommended dilutions:

ELISA:1:2000-1:10000, WB:1:500-1:1000,
IHC:1:50-1:100, IF:1:100-1:200

Protein Background:

Transcription factor involved in the regulation of the insulin signaling pathway. Binds to insulin-response elements (IREs) and can activate transcription of IGFBP1. Down-regulates expression of HIF1A and suppresses hypoxia-induced transcriptional activation of HIF1A-modulated genes. Also involved in negative regulation of the cell cycle.

Gene ID:

FOXO4

Uniprot

P98177

Synonyms:

AFX; FOXO4; AFX1; Afxh;

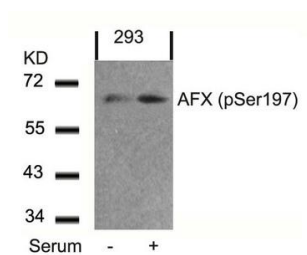
Immunogen:

Peptide sequence around phosphorylation site of serine 197 (A-A-S(p)-M-D) derived from Human AFX.

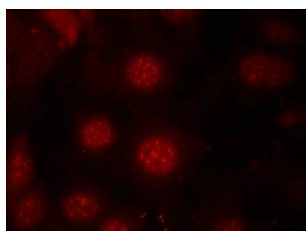
Storage:

Supplied at 1.0mg/mL in phosphate buffered saline (without Mg²⁺ and Ca²⁺), pH 7.4, 150mM NaCl, 0.02% sodium azide and 50% glycerol.

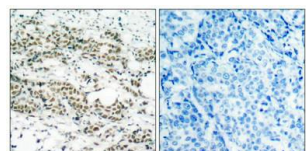
Product Images



Western blot analysis of extracts from 293 cells untreated or treated with serum using AFX(Phospho-Ser197) Antibody.



Immunofluorescence staining of methanol-fixed MCF7 cells using AFX(Phospho-Ser197) Antibody.



Immunohistochemical analysis of paraffin-embedded human breast carcinoma tissue using AFX(Phospho-Ser197) Antibody(left) or the same antibody preincubated with blocking peptide(right).