

Phospho-NFKBIA (Ser32/Ser36) Antibody



PACO24472

Product Information

Size:

100ul

Reactivity:

Human, Mouse, Rat

Source:

Rabbit

Isotype:

IgG

Applications:

ELISA, WB, IHC, IF

Recommended dilutions:

ELISA:1:2000-1:10000, WB:1:500-1:1000,
IHC:1:50-1:100, IF:1:100-1:200

Protein Background:

Inhibits the activity of dimeric NF-kappa-B/REL complexes by trapping REL dimers in the cytoplasm through masking of their nuclear localization signals. On cellular stimulation by immune and proinflammatory responses, becomes phosphorylated promoting ubiquitination and degradation, enabling the dimeric RELA to translocate to the nucleus and activate transcription.

Gene ID:

NFKBIA

Uniprot

P25963

Synonyms:

I-kappa-B-alpha; IKBA; NF-kappaB inhibitor alpha; NFKBI; NFKBIA

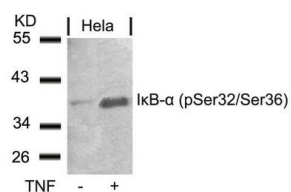
Immunogen:

Peptide sequence around phosphorylation site of serine 32/36 (H-D-S(p)-G-L-D-S(p)-M-K) derived from Human Ikb-a.

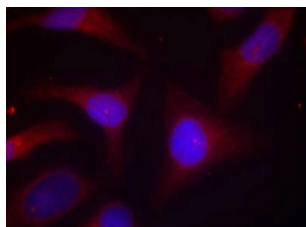
Storage:

Supplied at 1.0mg/mL in phosphate buffered saline (without Mg²⁺ and Ca²⁺), pH 7.4, 150mM NaCl, 0.02% sodium azide and 50% glycerol.

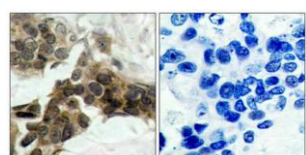
Product Images



Western blot analysis of extracts from HeLa cells untreated or treated with TNF using IκB-α (Phospho-Ser32/Ser36) Antibody.



Immunofluorescence staining of methanol-fixed HeLa cells using IκB-α (Phospho-Ser32/Ser36) Antibody.



Immunohistochemical analysis of paraffin-embedded human breast carcinoma tissue using IκB-α (Phospho-Ser32/Ser36) Antibody (left) or the same antibody preincubated with blocking peptide (right).