

Phospho-MAP2K4 (Ser80) Antibody



PACO24476

Product Information

Size:

100ul

Reactivity:

Human, Mouse, Rat

Source:

Rabbit

Isotype:

IgG

Applications:

ELISA, WB, IHC, IF

Recommended dilutions:

ELISA:1:2000-1:10000, WB:1:500-1:1000,
IHC:1:50-1:100, IF:1:100-1:200

Protein Background:

Dual specificity kinase that activates the JUN kinases MAPK8 (JNK1) and MAPK9 (JNK2) as well as MAPK14 (p38) but not MAPK1 (ERK2) or MAPK3 (ERK1).

Gene ID:

MAP2K4

Uniprot

P45985

Synonyms:

JNKK; JNKK1; MAP2K4; MAPK/ERK kinase 4; MAPKK 4

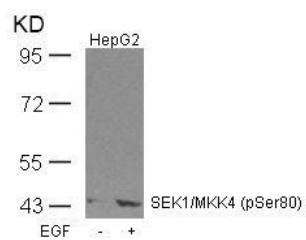
Immunogen:

Peptide sequence around phosphorylation site of serine 80 (T-H-S(p)-I-E) derived from Human SEK1/MKK4.

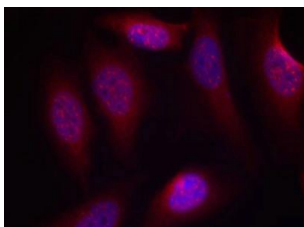
Storage:

Supplied at 1.0mg/mL in phosphate buffered saline (without Mg²⁺ and Ca²⁺), pH 7.4, 150mM NaCl, 0.02% sodium azide and 50% glycerol.

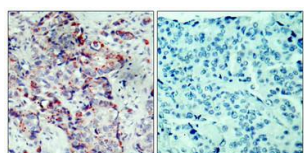
Product Images



Western blot analysis of extracts from HepG2 cells untreated or treated with EGF using SEK1/MKK4(Phospho-Ser80) Antibody.



Immunofluorescence staining of methanol-fixed HeLa cells using SEK1/MKK4(Phospho-Ser80) Antibody.



Immunohistochemical analysis of paraffin-embedded human breast carcinoma tissue using SEK1/MKK4(Phospho-Ser80) Antibody(left) or the same antibody preincubated with blocking peptide(right).