

# Phospho-MAPK14 (Tyr182) Antibody



PACO24491

---

## Product Information

**Size:**

100ul

**Reactivity:**

Human, Mouse, Rat

**Source:**

Rabbit

**Isotype:**

IgG

**Applications:**

ELISA, WB, IHC

**Recommended dilutions:**

ELISA:1:2000-1:10000, WB:1:500-1:1000,  
IHC:1:50-1:100

**Protein Background:****Gene ID:**

MAPK14

**Uniprot**

Q16539

**Synonyms:**

MAPK2; MAPKAPK-2; MAPKAPK2

**Immunogen:**

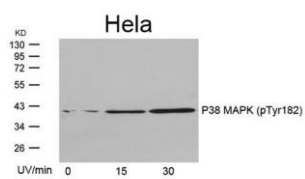
Peptide sequence around phosphorylation site of tyrosine 182 (T-G-Y(p)-V-A) derived from Human P38 MAPK.

**Storage:**

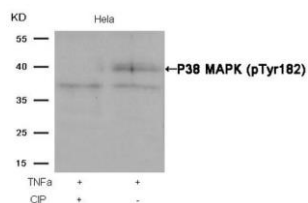
Supplied at 1.0mg/mL in phosphate buffered saline (without Mg<sup>2+</sup> and Ca<sup>2+</sup>), pH 7.4, 150mM NaCl, 0.02% sodium azide and 50% glycerol.

## Product Images

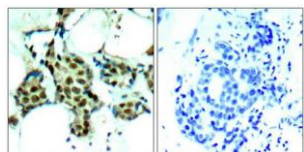
---



Western blot analysis of extracts from HeLa cells untreated or treated with UV for the indicated times, using P38 MAPK(Phospho-Tyr182) Antibody.



Western blot analysis of extracts from HeLa cells, treated with TNF $\alpha$  or calf intestinal phosphatase (CIP), using P38 MAPK (Phospho-Tyr182) Antibody.



Immunohistochemical analysis of paraffin-embedded human breast carcinoma tissue using P38 MAPK(Phospho-Tyr182) Antibody(left) or the same antibody preincubated with blocking peptide(right).