

# Phospho-RPS6KB1 (Ser424) Antibody



PACO24499

---

## Product Information

**Size:**

100ul

**Reactivity:**

Human, Mouse, Rat

**Source:**

Rabbit

**Isotype:**

IgG

**Applications:**

ELISA, WB, IHC, IF

**Recommended dilutions:**

ELISA:1:2000-1:10000, WB:1:500-1:1000,  
IHC:1:50-1:100, IF:1:100-1:200

**Protein Background:**

Phosphorylates specifically ribosomal protein S6 in response to insulin or several classes of mitogens. Promotes protein synthesis by phosphorylating PDCD4 at 'Ser-67' and targeting it for degradation.

**Gene ID:**

RPS6KB1

**Uniprot**

P23443

**Synonyms:**

KS6B1; P70-S6K; RPS6KB1; S6K;

**Immunogen:**

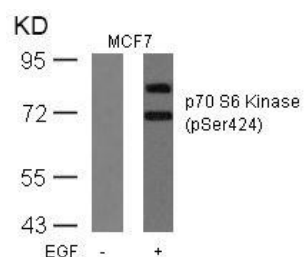
Peptide sequence around phosphorylation site of serine 424 (P-V-S(p)-P-V) derived from Human p70 S6 Kinase.

**Storage:**

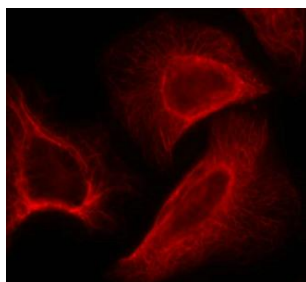
Supplied at 1.0mg/mL in phosphate buffered saline (without Mg<sup>2+</sup> and Ca<sup>2+</sup>), pH 7.4, 150mM NaCl, 0.02% sodium azide and 50% glycerol.

## Product Images

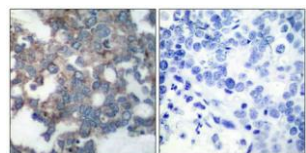
---



Western blot analysis of extracts from MCF cells untreated or treated with EGF using p70 S6 Kinase(Phospho-Ser424) Antibody.



Immunofluorescence staining of methanol-fixed Hela cells showing cytoplasmic, centrosomal and nuclear staining using p70 S6 Kinase(Phospho-Ser424) Antibody.



Immunohistochemical analysis of paraffin-embedded human breast carcinoma tissue using p70 S6 Kinase(Phospho-Ser424) Antibody(left) or the same antibody preincubated with blocking peptide(right).