

Phospho-KRT8 (Ser74) Antibody



PACO24500

Product Information

Size:

100ul

Reactivity:

Human

Source:

Rabbit

Isotype:

IgG

Applications:

ELISA, WB, IF

Recommended dilutions:

ELISA:1:2000-1:10000, WB:1:500-1:1000,
IF:1:100-1:200

Protein Background:**Gene ID:**

KRT8

Uniprot

P05787

Synonyms:

CK 8; CK8; CYK8; Cytokeratin endo A; K8

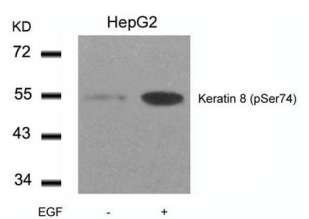
Immunogen:

Peptide sequence around phosphorylation site of serine 74 (L-L-S(p)-P-L) derived from Human Keratin 8 (CK8).

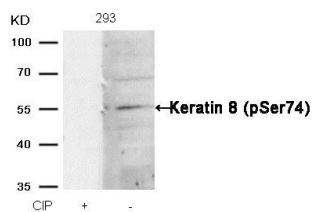
Storage:

Supplied at 1.0mg/mL in phosphate buffered saline (without Mg²⁺ and Ca²⁺), pH 7.4, 150mM NaCl, 0.02% sodium azide and 50% glycerol.

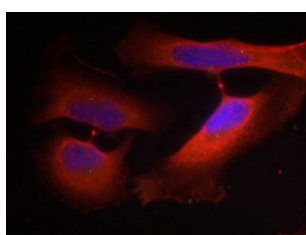
Product Images



Western blot analysis of extracts from HepG2 cells untreated or treated with EGF using Keratin 8(Phospho-Ser74) Antibody.



Western blot analysis of extracts from 293 cells, treated with calf intestinal phosphatase (CIP), using Keratin 8 (Phospho-Ser74) Antibody.



Immunofluorescence staining of methanol-fixed HeLa cells using Keratin 8(Phospho-Ser74) Antibody.