

Phospho-ABL1/ABL2 (Tyr393/439) Antibody



PACO24508

Product Information

Size:

100ul

Reactivity:

Human, Mouse

Source:

Rabbit

Isotype:

IgG

Applications:

ELISA, WB, IHC, IF

Recommended dilutions:

ELISA:1:2000-1:10000, WB:1:500-1:1000,
IHC:1:50-1:100, IF:1:100-1:200

Protein Background:**Gene ID:**

ABL1/ABL2

Uniprot

P00519/P42684

Synonyms:

Abelson murine leukemia viral oncogene homolog 1; c-ABL; p150

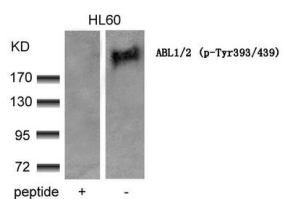
Immunogen:

Peptide sequence around phosphorylation site of tyrosine 393/439 (D-T-Y(p)-T-A) derived from Human ABL1/2.

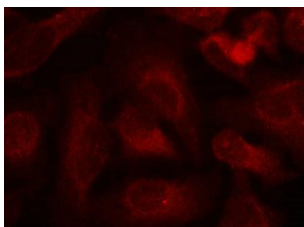
Storage:

Supplied at 1.0mg/mL in phosphate buffered saline (without Mg²⁺ and Ca²⁺), pH 7.4, 150mM NaCl, 0.02% sodium azide and 50% glycerol.

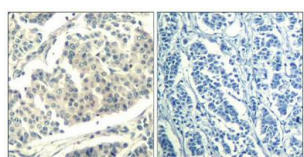
Product Images



Western blot analysis of extracts from HL60 cells using ABL1/2(phospho-Tyr393/439) Antibody and the same antibody preincubated with blocking peptide.



Immunofluorescence staining of methanol-fixed HeLa cells using ABL1/2(phospho-Tyr393/439) Antibody.



Immunohistochemical analysis of paraffin-embedded human breast carcinoma tissue using ABL1/2(Phospho-Tyr393/439) Antibody(left) or the same antibody preincubated with blocking peptide(right).