

Phospho-MARCKS (Ser170) Antibody



PACO24509

Product Information

Size:

100ul

Reactivity:

Human

Source:

Rabbit

Isotype:

IgG

Applications:

ELISA, WB, IHC

Recommended dilutions:

ELISA:1:2000-1:10000, WB:1:500-1:1000,
IHC:1:50-1:100

Protein Background:**Gene ID:**

MARCKS

Uniprot

P29966

Synonyms:

MACS, 80K-L, PKCSL, PRKCSL

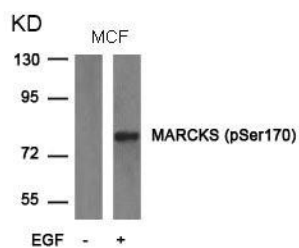
Immunogen:

Peptide sequence around phosphorylation site of Serine 170 (G-F-S(p)-F-K) derived from Human MARCKS.

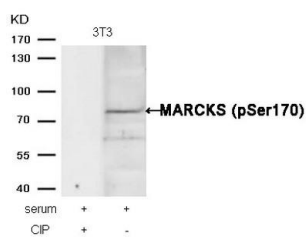
Storage:

Supplied at 1.0mg/mL in phosphate buffered saline (without Mg²⁺ and Ca²⁺), pH 7.4, 150mM NaCl, 0.02% sodium azide and 50% glycerol.

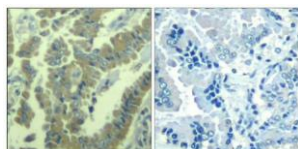
Product Images



Western blot analysis of extracts from MCF cells untreated or treated with EGF using MARCKS(phospho-Ser170) Antibody.



Western blot analysis of extracts from 3T3 cells, treated with serum or calf intestinal phosphatase (CIP), using MARCKS (phospho-Ser170) Antibody.



Immunohistochemical analysis of paraffin-embedded human lung carcinoma tissue using MARCKS(Phospho-Ser170) Antibody(left) or the same antibody preincubated with blocking peptide(right).