

# Phospho-CCNB1 (Ser147) Antibody



PACO24510

---

## Product Information

**Size:**

100ul

**Reactivity:**

Human

**Source:**

Rabbit

**Isotype:**

IgG

**Applications:**

ELISA, WB, IHC, IF

**Recommended dilutions:**

ELISA:1:2000-1:10000, WB:1:500-1:1000,  
IHC:1:50-1:100, IF:1:100-1:200

**Protein Background:**

The protein encoded by Cyclin B1 is a regulatory protein involved in mitosis. The gene product complexes with p34(cdc2) to form the maturation-promoting factor (MPF). Two alternative transcripts have been found, a constitutively expressed transcript and a cell cycle-regulated transcript, that is expressed predominantly during G2/M phase. The different transcripts result from the use of alternate transcription initiation sites.

**Gene ID:**

CCNB1

**Uniprot**

P14635

**Synonyms:****Immunogen:**

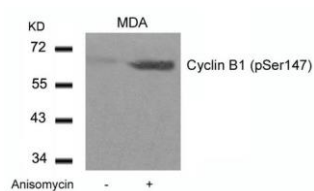
Peptide sequence around phosphorylation site of Serine 147 (A-F-S(p)-D-V) derived from Human Cyclin B1.

**Storage:**

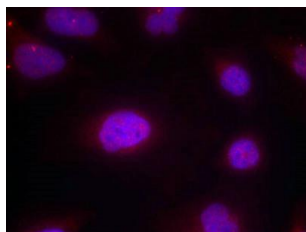
Supplied at 1.0mg/mL in phosphate buffered saline (without Mg<sup>2+</sup> and Ca<sup>2+</sup>), pH 7.4, 150mM NaCl, 0.02% sodium azide and 50% glycerol.

## Product Images

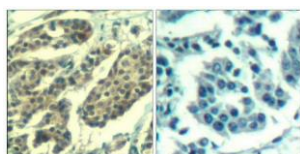
---



Western blot analysis of extracts from MDA cells untreated or treated with Anisomycin using Cyclin B1(phospho-Ser147) Antibody.



Immunofluorescence staining of methanol-fixed HeLa cells using Cyclin B1(phospho-Ser147) Antibody.



Immunohistochemical analysis of paraffin-embedded human breast carcinoma tissue using Cyclin B1(Phospho-Ser147) Antibody(left) or the same antibody preincubated with blocking peptide(right).