

Phospho-NFKB2 (Ser866) Antibody



PACO24519

Product Information

Size:

100ul

Reactivity:

Human, Mouse, Rat

Source:

Rabbit

Isotype:

IgG

Applications:

ELISA, WB, IHC, IF

Recommended dilutions:

ELISA:1:2000-1:10000, WB:1:500-1:1000,
IHC:1:50-1:100, IF:1:100-1:200

Protein Background:**Gene ID:**

NFKB2

Uniprot

Q00653

Synonyms:

p52; p105; H2TF1; LYT10; NF-kB2

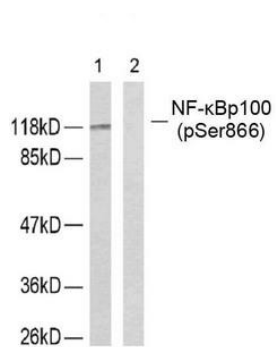
Immunogen:

Peptide sequence around phosphorylation site of serine 866(E-D-S(p)-A-Y) derived from Human NF B-p100.

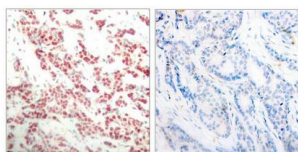
Storage:

Supplied at 1.0mg/mL in phosphate buffered saline (without Mg²⁺ and Ca²⁺), pH 7.4, 150mM NaCl, 0.02% sodium azide and 50% glycerol.

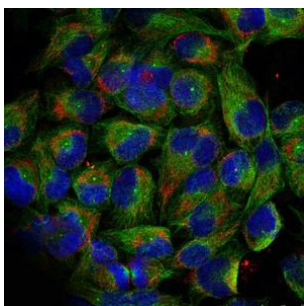
Product Images



Western blot analysis of extracts from ovary cancer cells using NF- κ B p100 (phospho-Ser866) antibody.



Immunohistochemical analysis of paraffin-embedded human breast carcinoma tissue using NF- κ B p100 (phospho-ser866) antibody.



Immunofluorescence staining of methanol-fixed HeLa cells using NF- κ B p100 (phospho-ser866) antibody.