

Phospho-APP (Thr743/668) Antibody



PACO24524

Product Information

Size:

100ul

Reactivity:

Human, Mouse, Rat

Source:

Rabbit

Isotype:

IgG

Applications:

ELISA, WB, IHC, IF

Recommended dilutions:

ELISA:1:2000-1:10000, WB:1:500-1:1000,
IHC:1:50-1:100, IF:1:100-1:200

Protein Background:**Gene ID:**

APP

Uniprot

P05067

Synonyms:

A4; AD1; APP; APPI; Beta-amyloid protein 42

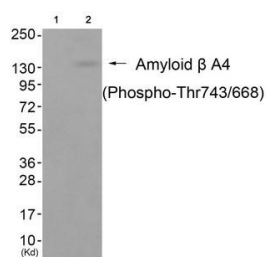
Immunogen:

Peptide sequence around phosphorylation site of threonine743 /668 (A-V-T(p)-P-E) derived from Human Amyloid β A4.

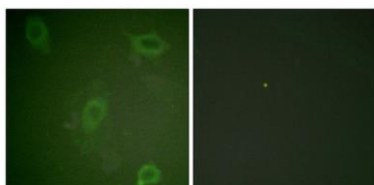
Storage:

Rabbit IgG in phosphate buffered saline (without Mg²⁺ and Ca²⁺), pH 7.4, 150mM NaCl, 0.02% sodium azide and 50% glycerol.

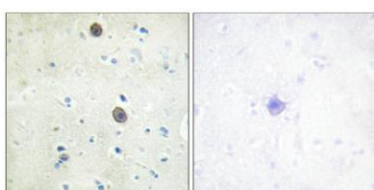
Product Images



Western blot analysis of extracts from cos-7 cells (Lane 2), using Amyloid beta A4 (Phospho-Thr743/668) Antibody. The lane on the left is treated with antigen-specific peptide.



Immunofluorescence staining of methanol-fixed HeLa cells using Amyloid beta A4 (phospho-Thr743/668) Antibody.



Immunohistochemical analysis of paraffin-embedded human brain tissue using Amyloid beta A4 (phospho-Thr743/668) antibody (left) or the same antibody preincubated with blocking peptide (right).