

Phospho-Ets1 (Thr38) Antibody



PACO24525

Product Information

Size:

100ul

Reactivity:

Human, Mouse

Source:

Rabbit

Isotype:

IgG

Applications:

ELISA, WB, IHC, IF

Recommended dilutions:

ELISA:1:2000-1:10000, WB:1:500-1:1000,
IHC:1:50-1:100, IF:1:100-1:200

Protein Background:**Gene ID:**

Ets1

Uniprot

P27577

Synonyms:

p54; ETS1; ETS-1; C-ets-1 protein;

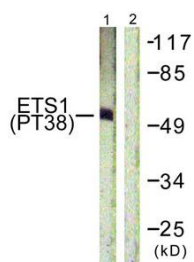
Immunogen:

Peptide sequence around phosphorylation site of threonine 38(L-L-T(p)-P-S) derived from Human ETS1.

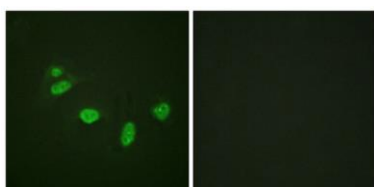
Storage:

Rabbit IgG in phosphate buffered saline (without Mg²⁺ and Ca²⁺), pH 7.4, 150mM NaCl, 0.02% sodium azide and 50% glycerol.

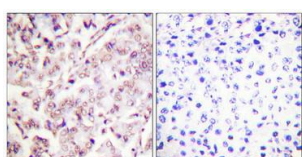
Product Images



Western blot analysis of extracts from HepG2 cells using ETS1 (Phospho-Thr38) Antibody. The lane on the right is treated with the antigen-specific peptide.



Immunofluorescence staining of methanol-fixed HeLa cells using ETS1 (Phospho-Thr38) Antibody.



Immunohistochemical analysis of paraffin-embedded human breast carcinoma tissue, using ETS1 (Phospho-Thr38) antibody (left) or the same antibody preincubated with blocking peptide (right).