

# Phospho-DOK2 (Tyr299) Antibody



PACO24552

---

## Product Information

**Size:**

100ul

**Reactivity:**

Human

**Source:**

Rabbit

**Isotype:**

IgG

**Applications:**

ELISA, WB, IHC, IF

**Recommended dilutions:**

ELISA:1:2000-1:10000, WB:1:500-1:1000,  
IHC:1:50-1:100, IF:1:100-1:200

**Protein Background:****Gene ID:**

DOK2

**Uniprot**

O60496

**Synonyms:**

DOK2

**Immunogen:**

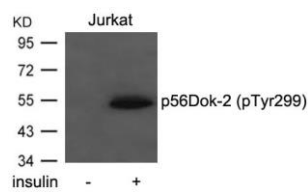
Peptide sequence around phosphorylation site of tyrosine 299 (G-E-Y(p)-A-V) derived from Human p56Dok-2.

**Storage:**

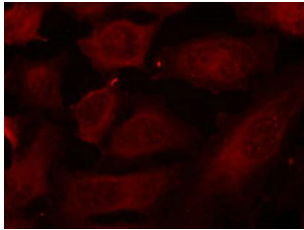
Supplied at 1.0mg/mL in phosphate buffered saline (without Mg<sup>2+</sup> and Ca<sup>2+</sup>), pH 7.4, 150mM NaCl, 0.02% sodium azide and 50% glycerol.

## Product Images

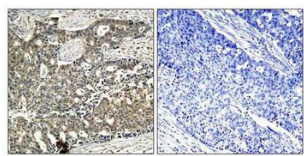
---



Western blot analysis of extracts from Jurkat cells untreated or treated with insulin using p56Dok-2(Phospho-Tyr299) Antibody.



Immunofluorescence staining of methanol-fixed HeLa cells using p56Dok-2(Phospho-Tyr299) Antibody.



Immunohistochemical analysis of paraffin-embedded human breast carcinoma tissue using p56Dok-2(Phospho-Tyr299) Antibody(left) or the same antibody preincubated with blocking peptide(right).