

# Phospho-PRKCQ (Ser676) Antibody



PACO24554

---

## Product Information

**Size:**

100ul

**Reactivity:**

Human, Mouse, Rat

**Source:**

Rabbit

**Isotype:**

IgG

**Applications:**

ELISA, WB, IHC, IF

**Recommended dilutions:**

ELISA:1:2000-1:10000, WB:1:500-1:1000,  
IHC:1:50-1:100, IF:1:100-1:200

**Protein Background:****Gene ID:**

PRKCQ

**Uniprot**

Q04759

**Synonyms:**

KPCT; PKC-theta; PKCQ; PRKCQ; PRKCT

**Immunogen:**

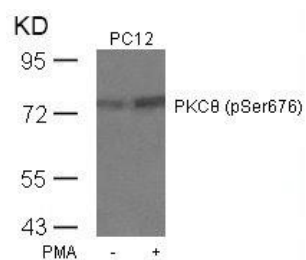
Peptide sequence around phosphorylation site of serine 676 (R-L-S(p)-F-A) derived from Human PKCth.

**Storage:**

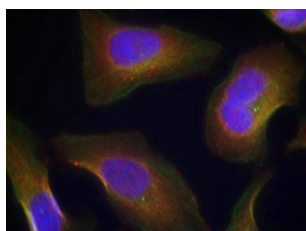
Supplied at 1.0mg/mL in phosphate buffered saline (without Mg<sup>2+</sup> and Ca<sup>2+</sup>), pH 7.4, 150mM NaCl, 0.02% sodium azide and 50% glycerol.

## Product Images

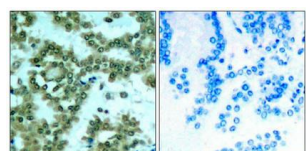
---



Western blot analysis of extracts from PC12 cells untreated or treated with PMA using PKC $\theta$ (Phospho-Ser676) Antibody.



Immunofluorescence staining of methanol-fixed HeLa cells using PKC $\theta$ (Phospho-Ser676) Antibody.



Immunohistochemical analysis of paraffin-embedded human lung carcinoma tissue using PKC $\theta$ (Phospho-Ser676) Antibody(left) or the same antibody preincubated with blocking peptide(right).