

# Phospho-GSK3A/GSK3B (Tyr279/216) Antibody



PACO24555

---

## Product Information

**Size:**

100ul

**Reactivity:**

Human, Mouse, Rat

**Source:**

Rabbit

**Isotype:**

IgG

**Applications:**

ELISA, WB, IHC, IF

**Recommended dilutions:**

ELISA:1:2000-1:10000, WB:1:500-1:1000,  
IHC:1:50-1:100, IF:1:100-1:200

**Protein Background:****Gene ID:**

GSK3A/GSK3B

**Uniprot**

P49840/P49841

**Synonyms:**

Factor A; GSK-3 alpha/beta; kinase GSK3-alpha/beta

**Immunogen:**

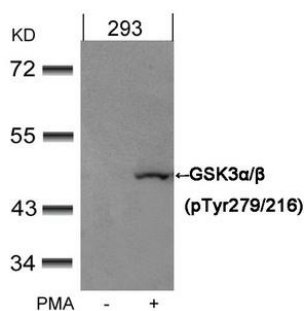
Peptide sequence around phosphorylation site of tyrosine 279/216 (V-S-Y(p)-I-C) derived from Human GSK3 /.

**Storage:**

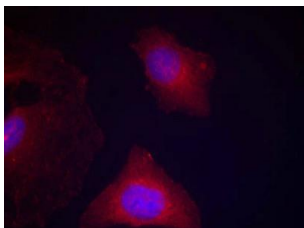
Supplied at 1.0mg/mL in phosphate buffered saline (without Mg<sup>2+</sup> and Ca<sup>2+</sup>), pH 7.4, 150mM NaCl, 0.02% sodium azide and 50% glycerol.

## Product Images

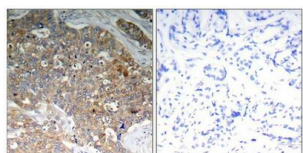
---



Western blot analysis of extracts from 293 cells untreated or treated with PMA using GSK3 $\alpha/\beta$ (Phospho-Tyr279/216) Antibody.



Immunofluorescence staining of methanol-fixed HeLa cells using GSK3 $\alpha/\beta$ ; (Phospho-Tyr279/216) Antibody.



Immunohistochemical analysis of paraffin-embedded human breast carcinoma tissue using GSK3 $\alpha/\beta$ (Phospho-Tyr279/216) Antibody (left) or the same antibody preincubated with blocking peptide (right).