

Phospho-CDK6 (Tyr13) Antibody



PACO24558

Product Information

Size:

100ul

Reactivity:

Human, Mouse

Source:

Rabbit

Isotype:

IgG

Applications:

ELISA, WB, IHC, IF

Recommended dilutions:

ELISA:1:2000-1:10000, WB:1:500-1:1000,
IHC:1:50-1:100, IF:1:100-1:200

Protein Background:**Gene ID:**

CDK6

Uniprot

Q00534

Synonyms:

Serine/threonine-protein kinase PLSTIRE

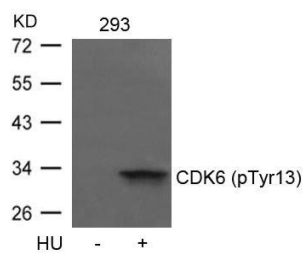
Immunogen:

Peptide sequence around phosphorylation site of tyrosine 13 (Q-Q-Y(p)-E-C) derived from Human CDK6.

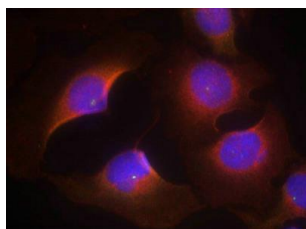
Storage:

Supplied at 1.0mg/mL in phosphate buffered saline (without Mg²⁺ and Ca²⁺), pH 7.4, 150mM NaCl, 0.02% sodium azide and 50% glycerol.

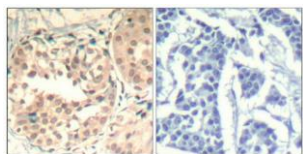
Product Images



Western blot analysis of extracts from 293 cells untreated or treated with HU using CDK6(phospho-Tyr13) Antibody.



Immunofluorescence staining of methanol-fixed HeLa cells using CDK6(phospho-Tyr13) Antibody.



Immunohistochemical analysis of paraffin-embedded human breast carcinoma tissue using CDK6(Phospho-Tyr13) Antibody(left) or the same antibody preincubated with blocking peptide(right).