

Phospho-BCL2L1 (Ser62) Antibody



PACO24560

Product Information

Size:

100ul

Reactivity:

Human, Mouse, Rat

Source:

Rabbit

Isotype:

IgG

Applications:

ELISA, WB, IHC, IF

Recommended dilutions:

ELISA:1:2000-1:10000, WB:1:500-1:1000,
IHC:1:50-1:100, IF:1:100-1:200

Protein Background:

Gene ID:

BCL2L1

Uniprot

Q07817

Synonyms:

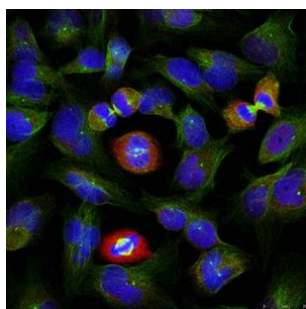
BCLX, BCL2L, BCLXL, BCLXS,

Immunogen:

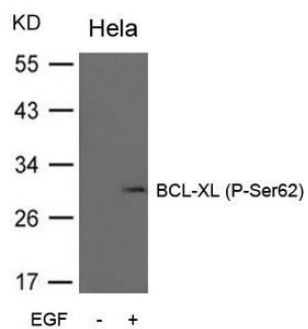
Storage:

Purified Rabbit polyclonal in PBS(pH 7.4) containing with 0.02% sodium azide and 50% glycerol.

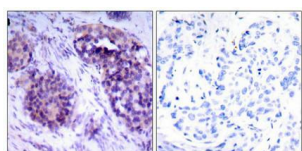
Product Images



Immunofluorescence staining of methanol-fixed HeLa cells using BCL-XL (phospho-Ser62) antibody.



Western blot analysis of extracts from HeLa cells untreated or treated with EGF using BCL-XL (Phospho-Ser62) Antibody.



Immunohistochemical analysis of paraffin-embedded human breast carcinoma tissue using BCL-XL (phospho-Ser62) antibody.