

# Phospho-RELA (Ser536) Antibody



PACO24566

---

## Product Information

**Size:**

100ul

**Reactivity:**

Human, Mouse, Rat

**Source:**

Rabbit

**Isotype:**

IgG

**Applications:**

ELISA, WB, IHC, IF

**Recommended dilutions:**

ELISA:1:2000-1:10000, WB:1:500-1:1000,  
IHC:1:50-1:100, IF:1:100-1:200

**Protein Background:****Gene ID:**

RELA

**Uniprot**

Q04206

**Synonyms:**

NFKB3; RELA; TF65; Transcription factor p65; p65

**Immunogen:**

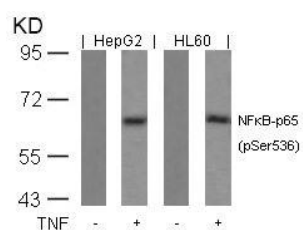
Peptide sequence around phosphorylation site of serine 536 (F-S-S(p)-I-A) derived from Human NFkB-p65.

**Storage:**

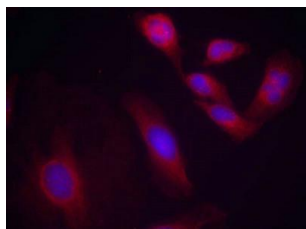
Supplied at 1.0mg/mL in phosphate buffered saline (without Mg<sup>2+</sup> and Ca<sup>2+</sup>), pH 7.4, 150mM NaCl, 0.02% sodium azide and 50% glycerol.

## Product Images

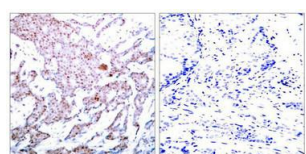
---



Western blot analysis of extracts from HepG2 and HL60 cells untreated or treated with TNF using NFκB-p65(Phospho-Ser536) Antibody.



Immunofluorescence staining of methanol-fixed HeLa cells using NFκB-p65(Phospho-Ser536) Antibody.



Immunohistochemical analysis of paraffin-embedded human breast carcinoma tissue using NF kappa B-p65 (Phospho-Ser536) Antibody (left) or the same antibody preincubated with blocking peptide (right).