

Histone H3R17me1 Antibody



PACO24588

Product Information

Size:

100ul

Reactivity:

Human, Mouse, Rat

Source:

Rabbit

Isotype:

IgG

Applications:

ELISA, WB, IHC, IF

Recommended dilutions:

ELISA:1:2000-1:10000, WB:1:500-1:2000,
IHC:1:50-1:200, IF:1:50-1:200

Protein Background:

Gene ID:

HIST3H3

Uniprot

Q16695

Synonyms:

HIST1H3J; H3/j; H3FJ; Histone H3.1; Histone H3/a; Histone H3/b; Histone H3/c; Histone H3/d; Histone H3/f; Histone H3/h; Histone H3/l; HistoneH3/j; Histone H3/k; Histone H3/l;

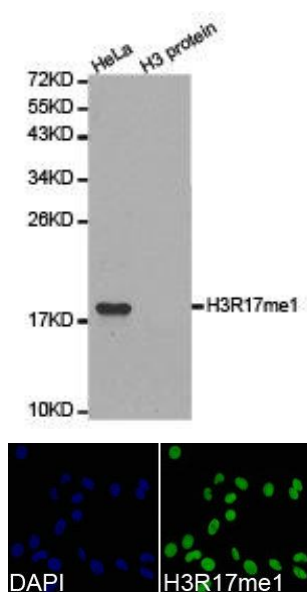
Immunogen:

A synthetic mono-methylatedpeptide corresponding to residues surrounding Arg17 of human histone H3.

Storage:

Buffer: PBS with 0.02% sodium azide, 50% glycerol, pH7.3.

Product Images



Western blot analysis of extracts of HeLa cell line and H3 protein expressed in E.coli. , using H3R17me1 antibody.

Immunofluorescence analysis of 293T cell using H3R17me1 antibody. Blue: DAPI for nuclear staining.