

# Histone H3R8me1 Antibody



PACO24592

---

## Product Information

**Size:**

100ul

**Reactivity:**

Human, Mouse, Rat

**Source:**

Rabbit

**Isotype:**

IgG

**Applications:**

ELISA, WB, IHC, IF, CHIP

**Recommended dilutions:**

ELISA:1:2000-1:10000, WB:1:500-1:2000,  
IHC:1:50-1:200, IF:1:50-1:200, CHIP:1:50-  
1:200,

**Protein Background:**

**Gene ID:**

HIST3H3

**Uniprot**

Q16695

**Synonyms:**

HIST1H3J; H3/j; H3FJ; Histone H3.1; Histone H3/a; Histone H3/b; Histone H3/c; Histone H3/d; Histone H3/f; Histone H3/h; Histone H3/l; HistoneH3/j; Histone H3/k; Histone H3/l; HIST3H3;

**Immunogen:**

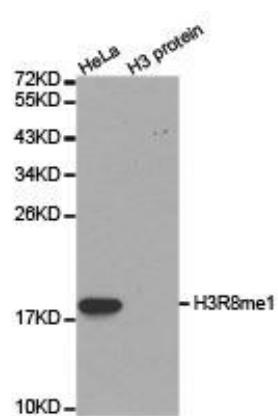
A synthetic methylated peptide corresponding to residues surrounding R8 of human histone H3.

**Storage:**

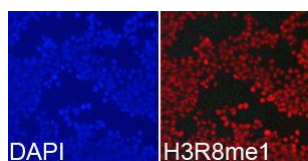
Buffer: PBS with 0.02% sodium azide, 50% glycerol, pH7.3.

## Product Images

---



Western blot analysis of extracts of HeLa cell line and H3 protein expressed in E.coli. , using H3R8me1 antibody.



Immunofluorescence analysis of 293T cell using H3R8me1 antibody. Blue: DAPI for nuclear staining.