

PACO24636

Product Information

Size:

50ug

Reactivity:

Horse

Source:

Rabbit

Isotype:

IgG

Applications:

ELISA, WB

Recommended dilutions:

ELISA:1:2000-1:10000, WB:1:500-1:5000

Protein Background:

Serum albumin, the main protein of plasma, has a good binding capacity for water, Ca(2+), Na(+), K(+), fatty acid, , hormones, bilirubin and drugs. Its main function is the regulation of the colloidal osmotic pressure of blood. Major zinc transporter in plasma, typically binds about 80% of all plasma zinc.

Gene ID:

ALB

Uniprot

P35747

Synonyms:

Serum albumin (allergen Equ c 3), ALB

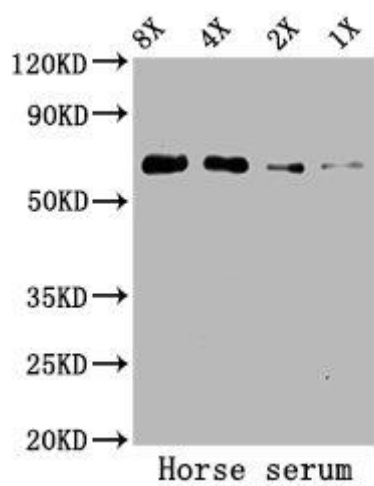
Immunogen:

Serum Albumin purified from Horse serum (Native Protein).

Storage:

Preservative: 0.03% Proclin 300. Constituents: 50% Glycerol, 0.01M PBS, PH 7.4

Product Images



Western Blot

Positive WB detected in: Horse serum

All lanes: ALB antibody at 5.2 μ g/ml

Secondary

Goat polyclonal to rabbit IgG at 1/50000 dilution

Predicted band size: 69 kDa

Observed band size: 69 kDa