

PACO24664

Product Information

Size:

50ug

Reactivity:

Human

Source:

Rabbit

Isotype:

IgG

Applications:

ELISA, WB, IHC

Recommended dilutions:

ELISA:1:2000-1:10000, WB:1:1000-1:5000,
IHC:1:20-1:200

Protein Background:

Regulates the GDP/GTP exchange reaction of the Rho proteins by inhibiting the dissociation of GDP from them, and the subsequent binding of GTP to them.

Gene ID:

ARHGDI1

Uniprot

P52565

Synonyms:

Rho GDP-dissociation inhibitor 1 (Rho GDI 1) (Rho-GDI alpha), ARHGDI1, GDIA1

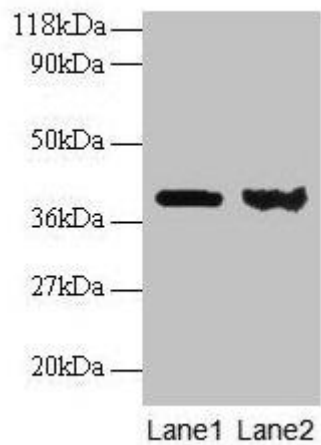
Immunogen:

Recombinant Human Rho GDP-dissociation inhibitor 1 protein (2-204AA).

Storage:

Preservative: 0.03% Proclin 300. Constituents: 50% Glycerol, 0.01M PBS, PH 7.4

Product Images



Western blot

All lanes: ARHGDI A antibody at 2 μ g/ml

Lane 1: EC109 whole cell lysate

Lane 2: 293T whole cell lysate

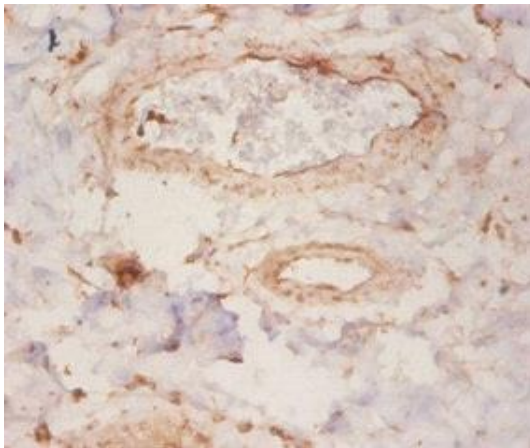
Secondary

Goat polyclonal to rabbit IgG at 1/15000 dilution

Predicted band size: 24, 19 kDa

Observed band size: 40 kDa

.



Immunohistochemistry of paraffin-embedded human mammary gland tissue using PACO24664 at dilution of 1:50.