

# AADACL2 Antibody



PACO24676

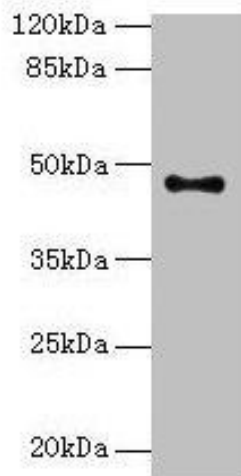
---

## Product Information

<b>Size:</b>	<b>Protein Background:</b>
50ug	
<b>Reactivity:</b>	<b>Gene ID:</b>
Human	AADACL2
<b>Source:</b>	<b>Uniprot</b>
Rabbit	Q6P093
<b>Isotype:</b>	<b>Synonyms:</b>
IgG	Arylacetamide deacetylase-like 2 (EC 3.1.1. -), AADACL2
<b>Applications:</b>	<b>Immunogen:</b>
ELISA, WB	Recombinant Human Arylacetamide deacetylase-like 2 protein (203-401AA).
<b>Recommended dilutions:</b>	<b>Storage:</b>
ELISA:1:2000-1:10000, WB:1:1000-1:5000	Preservative: 0.03% Proclin 300. Constituents: 50% Glycerol, 0.01M PBS, PH 7.4

## Product Images

---



### Western blot

All lanes: AADACL2 antibody at 2 $\mu$ g/ml + PC-3 whole cell lysate

Secondary

Goat polyclonal to rabbit IgG at 1/10000 dilution

Predicted band size: 47, 6 kDa

Observed band size: 47 kDa