

# ADAMDEC1 Antibody



PACO24759

---

## Product Information

**Size:**

50ug

**Reactivity:**

Human

**Source:**

Rabbit

**Isotype:**

IgG

**Applications:**

ELISA, IHC

**Recommended dilutions:**

ELISA:1:2000-1:10000, IHC:1:20-1:200

**Protein Background:**

May play an important role in the control of the immune response and during pregnancy.

**Gene ID:**

ADAMDEC1

**Uniprot**

O15204

**Synonyms:**

ADAM DEC1 (EC 3.4.24. -) (A disintegrin and metalloproteinase domain-like protein decysin-1) (ADAM-like protein decysin-1), ADAMDEC1

**Immunogen:**

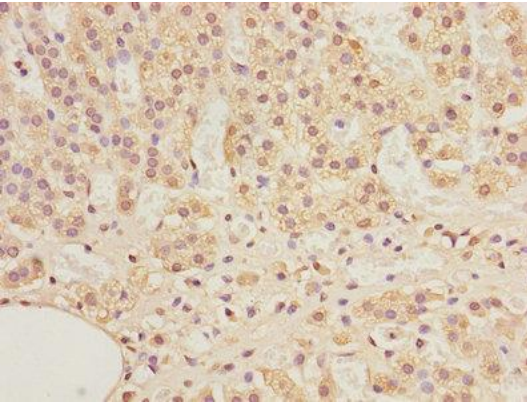
Recombinant Human ADAM DEC1 protein (206-470AA).

**Storage:**

Preservative: 0.03% Proclin 300. Constituents: 50% Glycerol, 0.01M PBS, PH 7.4

## Product Images

---



Immunohistochemistry of paraffin-embedded human adrenal gland tissue using PACO24759 at dilution of 1:100.