

# Anxa1 Antibody



PACO24920

---

## Product Information

**Size:**

50ug

**Reactivity:**

Human, Mouse

**Source:**

Rabbit

**Isotype:**

IgG

**Applications:**

ELISA, WB, IP

**Recommended dilutions:**

ELISA:1:2000-1:10000, WB:1:1000-1:5000,  
IP:1:200-1:2000

**Protein Background:**

Calcium/phospholipid-binding protein which promotes membrane fusion and is involved in exocytosis. This protein regulates phospholipase A2 activity. It seems to bind from two to four calcium ions with high affinity.

**Gene ID:**

Anxa1

**Uniprot**

P10107

**Synonyms:**

Annexin A1 (Annexin I) (Annexin-1) (Calpactin II) (Calpactin-2) (Chromobindin-9) (Lipocortin I) (Phospholipase A2 inhibitory protein) (p35), Anxa1, Anx1 Lpc-1 Lpc1

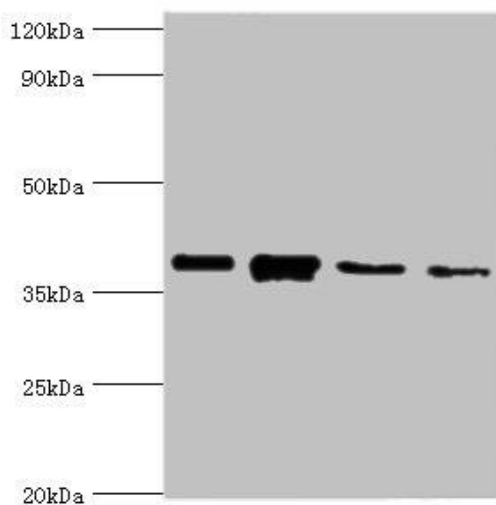
**Immunogen:**

Recombinant Mouse Annexin A1 protein (2-346AA).

**Storage:**

Preservative: 0.03% Proclin 300. Constituents: 50% Glycerol, 0.01M PBS, PH 7.4

## Product Images



### Western blot

All lanes: Anxa1 antibody at 2µg/ml

Lane 1: PC-3 whole cell lysate

Lane 2: A431 whole cell lysate

Lane 3: K562 whole cell lysate

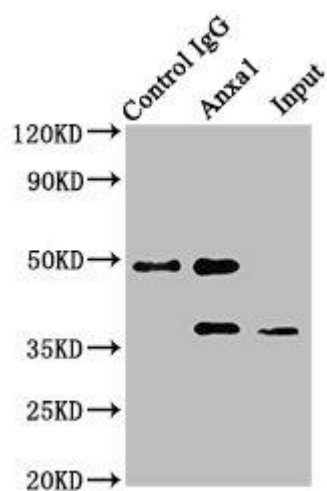
Lane 4: MCF-7 whole cell lysate

Secondary

Goat polyclonal to rabbit IgG at 1/10000 dilution

Predicted band size: 39 kDa

Observed band size: 39 kDa

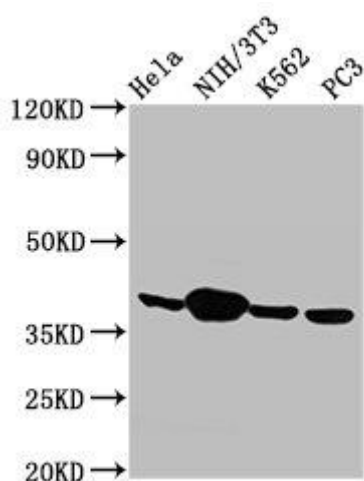


### Immunoprecipitating Anxa1 in NIH/3T3 whole cell lysate

Lane 1: Rabbit control IgG instead of PACO24920 in NIH/3T3 whole cell lysate. For western blotting, a HRP-conjugated Protein G antibody was used as the secondary antibody (1/2000)

Lane 2: PACO24920 (8µg) + NIH/3T3 whole cell lysate (500µg)

Lane 3: NIH/3T3 whole cell lysate (20µg)



### Western Blot

Positive WB detected in: HeLa whole cell lysate, NIH/3T3 whole cell lysate, K562 whole cell lysate, PC-3 whole cell lysate

All lanes: Anxa1 antibody at 2.9µg/ml

Secondary

Goat polyclonal to rabbit IgG at 1/50000 dilution

Predicted band size: 39 kDa

Observed band size: 39 kDa