

## Product Information

**Size:**

50ug

**Reactivity:**

Human

**Source:**

Rabbit

**Isotype:**

IgG

**Applications:**

ELISA, IHC

**Recommended dilutions:**

ELISA:1:2000-1:10000, IHC:1:20-1:200

**Protein Background:**

Part of the AP-3 complex, an adaptor-related complex which is not clathrin-associated. The complex is associated with the Golgi region as well as more peripheral structures. It facilitates the budding of vesicles from the Golgi membrane and may be directly involved in trafficking to lysosomes. In concert with the BLOC-1 complex, AP-3 is required to target cargos into vesicles assembled at cell bodies for delivery into neurites and nerve terminals.

**Gene ID:**

AP3M2

**Uniprot**

P53677

**Synonyms:**

AP-3 complex subunit mu-2 (Adaptor-related protein complex 3 subunit mu-2) (Clathrin assembly protein assembly protein complex 3 mu-2 medium chain) (Clathrin coat assembly protein AP47 homolog 2) (Clathrin coat-associated protein AP47 homolog 2) (Golgi adaptor AP-1 47 kDa protein homolog 2) (HA1 47 kDa subunit homolog 2) (Mu3B-adaptin) (P47B), AP3M2

**Immunogen:**

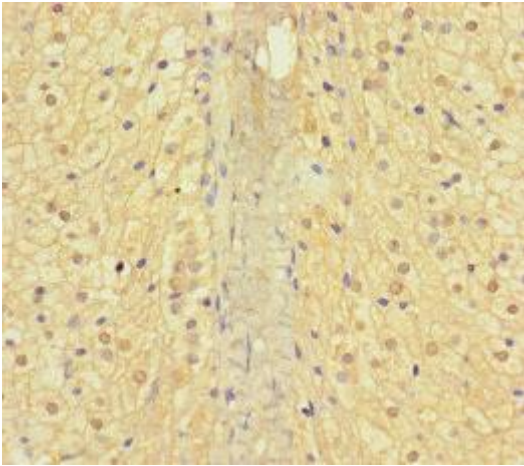
Recombinant Human AP-3 complex subunit mu-2 protein (1-273AA).

**Storage:**

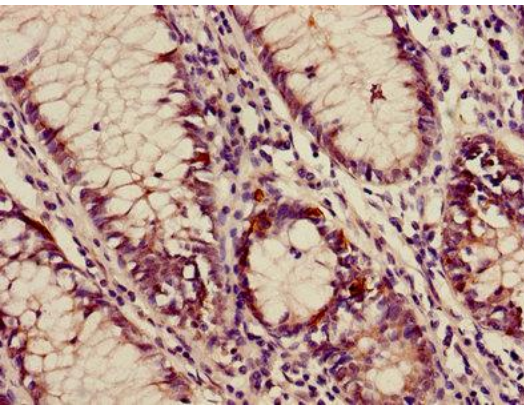
Preservative: 0.03% Proclin 300. Constituents: 50% Glycerol, 0.01M PBS, PH 7.4

## Product Images

---



Immunohistochemistry of paraffin-embedded human adrenal gland tissue using PACO24956 at dilution of 1:100.



Immunohistochemistry of paraffin-embedded human colon cancer using PACO24956 at dilution of 1:100.