

PACO25076

---

## Product Information

**Size:**

50ug

**Reactivity:**

Human, Rat

**Source:**

Rabbit

**Isotype:**

IgG

**Applications:**

ELISA, WB, IHC, IF

**Recommended dilutions:**

ELISA:1:2000-1:10000, WB:1:500-1:5000,  
IHC:1:20-1:200, IF:1:50-1:500

**Protein Background:**

Hydrolyzes the sphingolipid ceramide into sphingosine and free fatty acid, at an optimal pH of 6.5-8.5. Acts as a key regulator of sphingolipid signaling metabolites by generating sphingosine at the cell surface. Acts as a repressor of apoptosis both by reducing C16-ceramide, thereby preventing ceramide-induced apoptosis, and generating sphingosine, a precursor of the antiapoptotic factor sphingosine 1-phosphate. Probably involved in the digestion of dietary sphingolipids in intestine by acting as a key enzyme for the catabolism of dietary sphingolipids and regulating the levels of bioactive sphingolipid metabolites in the intestinal tract.

**Gene ID:**

ASAH2

**Uniprot**

Q9NR71

**Synonyms:**

Neutral ceramidase (N-CDase) (NCDase) (EC 3.5.1.23) (Acylsphingosine deacylase 2) (BCDase) (LCDase) (hCD) (N-acylsphingosine amidohydrolase 2) (Non-lysosomal ceramidase) [Cleaved into: Neutral ceramidase soluble form], ASAH2, HNAC1

**Immunogen:**

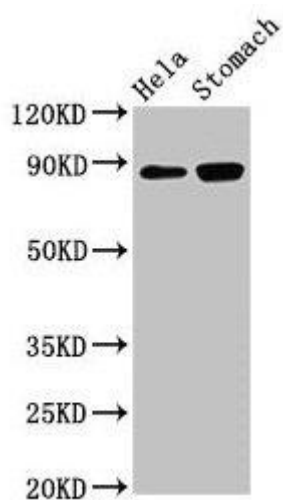
Recombinant Human Neutral ceramidase protein (255-506AA).

**Storage:**

Preservative: 0.03% Proclin 300. Constituents: 50% Glycerol, 0.01M PBS, PH 7.4

## Product Images

---



### Western Blot

Positive WB detected in: HeLa whole cell lysate, Rat stomach tissue

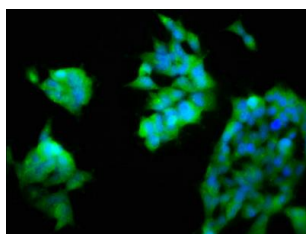
All lanes: ASAH2 antibody at 3 $\mu$ g/ml

Secondary

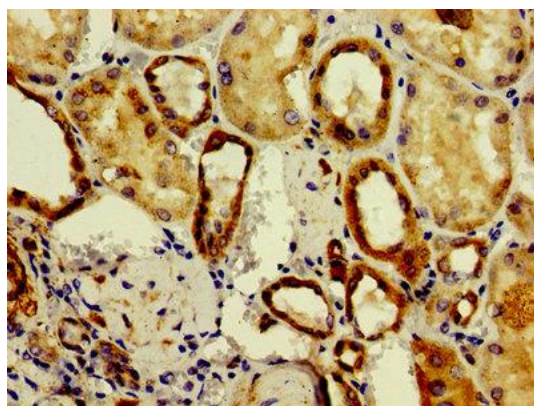
Goat polyclonal to rabbit IgG at 1/50000 dilution

Predicted band size: 86, 82 kDa

Observed band size: 86 kDa



Immunofluorescence staining of 293 cells with PACO25076 at 1:200, counter-stained with DAPI. The cells were fixed in 4% formaldehyde, permeabilized using 0.2% Triton X-100 and blocked in 10% normal Goat Serum. The cells were then incubated with the antibody overnight at 4°C. The secondary antibody was Alexa Fluor 488-conjugated AffiniPure Goat Anti-Rabbit IgG(H+L).



Immunohistochemistry of paraffin-embedded human kidney tissue using PACO25076 at dilution of 1:100.